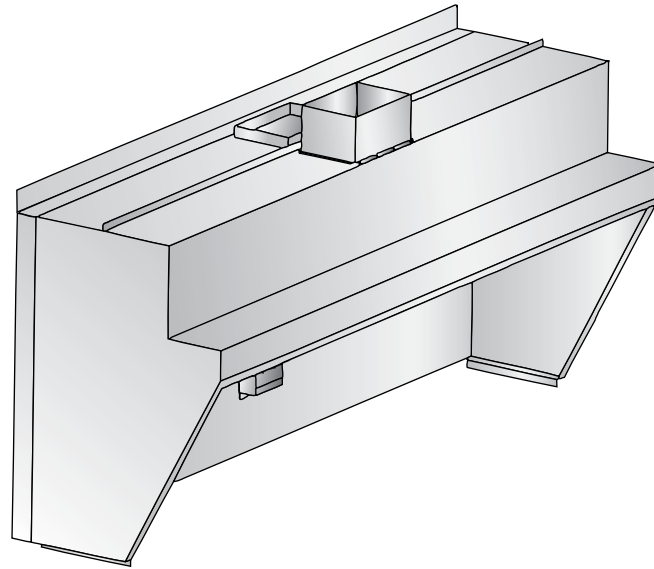


Duo-Aire

CAS-PS Make-up Air Low Side Wall Ventilator

With Plate Shelf

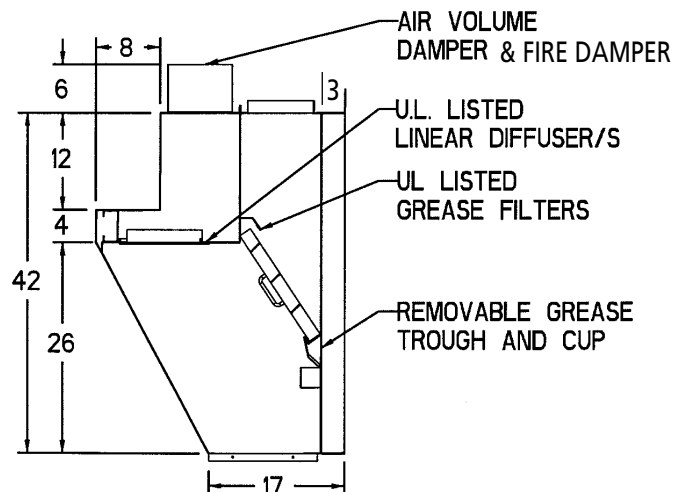


Model CAS-PS (base mount shown)

A double shell make-up air low side wall back shelf ventilator with integral plate shelf shall be constructed of stainless steel where visible and aluminized steel where concealed. The make-up air grill shall be extruded aluminum diffuser with 15°, nonadjustable vanes spaced 1/2" apart. The supply plenum shall be lined with 1" thick aluminum faced insulation and shall contain two perforated metal plates to equalize air flow. A combination UL Listed fire damper and air volume control damper to be supplied by factory. All external seams shall be fluid welded and all internal seams shall be sealed with a high temp. silicone caulk. Ventilator to be Listed to meet NSF and UL 710 standards and constructed to meet NFPA-96. Grease trough to be easily removable and sloped to removable grease cup.

STANDARD FEATURES

- UL Listed Aluminum Grease Filters
- Removable Grease Trough & Cup
- Built-In Plate Shelf
- Internal Make-up Air
- Integral 3" Rear Standoff
- UL Listed Fire and Air Volume Dampers in Supply Collar
- Stainless Steel Construction



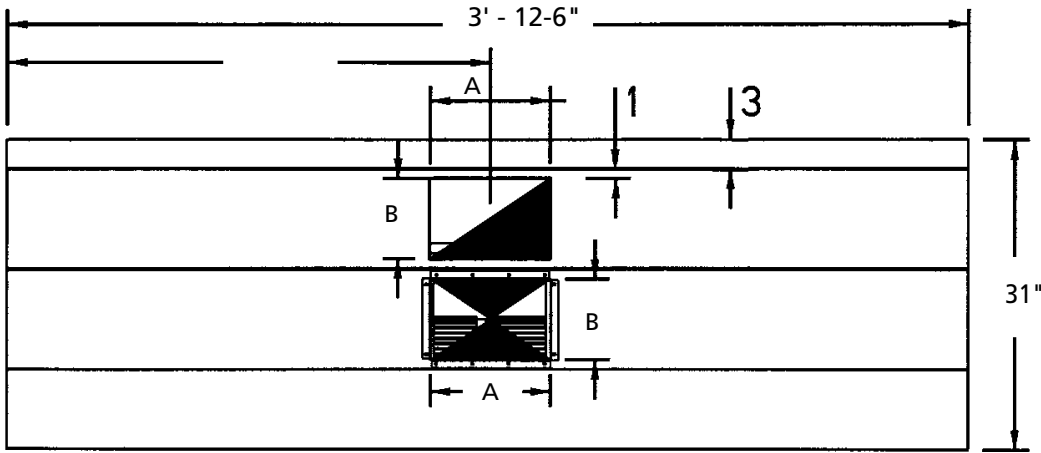
Section

(See reverse side for larger drawing)

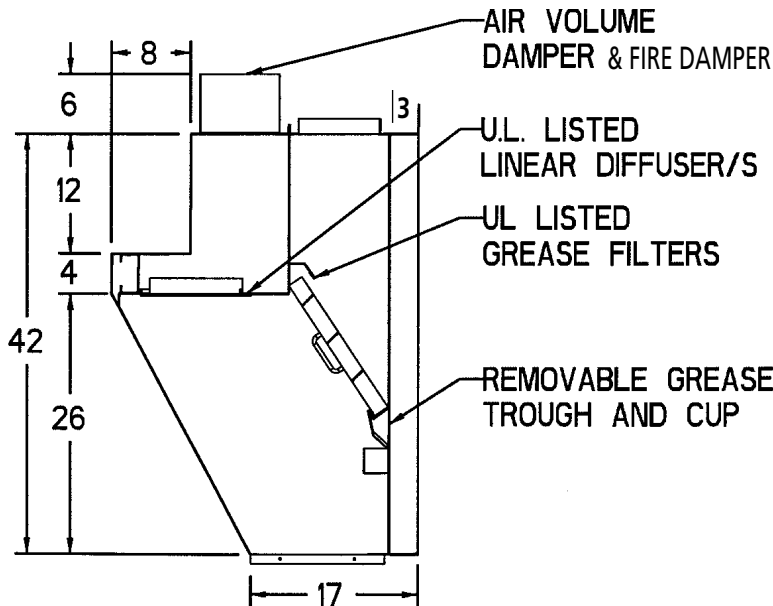
BUILT IN
ACCORDANCE
WITH NFPA 96



CAS-PS Series - Make-up Air Low Side Wall Ventilator



Plan View



Section

EXHAUST AND SUPPLY RATE REQUIREMENTS

(Recommended Min. Exhaust Flow Rate)	TEMPERATURE OF EQUIPMENT		
	400°	600°	700°
CFM Exhaust / Ft.	300	350	-
CFM Supply / Ft.	150	150	-

ORDER ENTRY INFORMATION

Project:

Item:

Representative:

Model:

Length: Qty:

Width:
Height:

Duct - Concentric
Parallel

Exhaust CFM:
Supply CFM:

Entered by:

Date:

Drawings Req'd: Y N

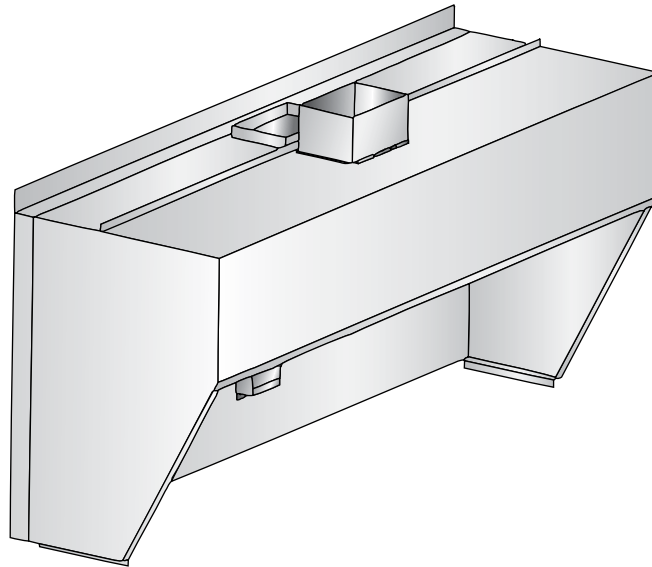
List Miscellaneous
Options Separately

Duo-Aire[®]

Duo-Aire reserves the right to make changes in design and specifications without prior notice.

Duo-Aire[®] CAS Make-up Air Low Side Wall Ventilator

Without Plate Shelf

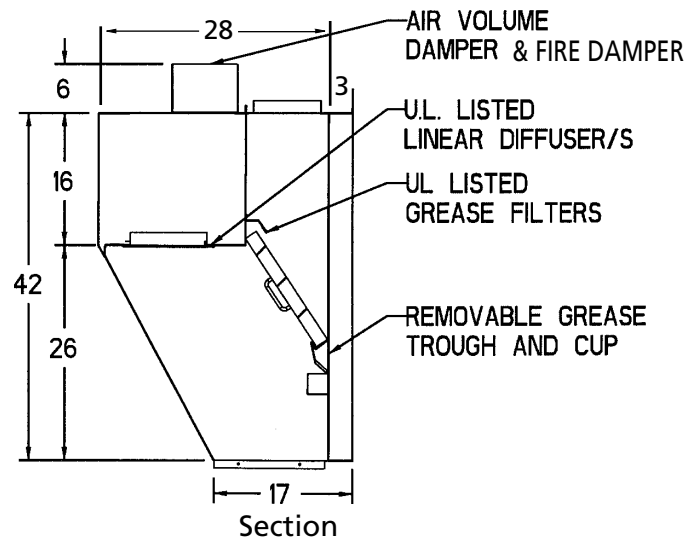


Model CAS (base mount shown)

A double shell make-up air low side wall back shelf ventilator with no plate shelf shall be constructed of stainless steel where visible and aluminized steel where concealed. The make-up air grill shall be extruded aluminum diffuser with 15°, nonadjustable vanes spaced 1/2" apart. The supply plenum shall be lined with 1" thick aluminum faced insulation and shall contain two perforated metal plates to equalize air flow. A UL Listed fire damper, and volume control damper to be supplied by factory. All external seams shall be fluid welded and all internal seams shall be sealed with a high temp. silicone caulk. Ventilator to be Listed to meet NSF and UL 710 standards and constructed to meet NFPA-96. Grease trough to be easily removable and slope to removable grease cup.

STANDARD FEATURES

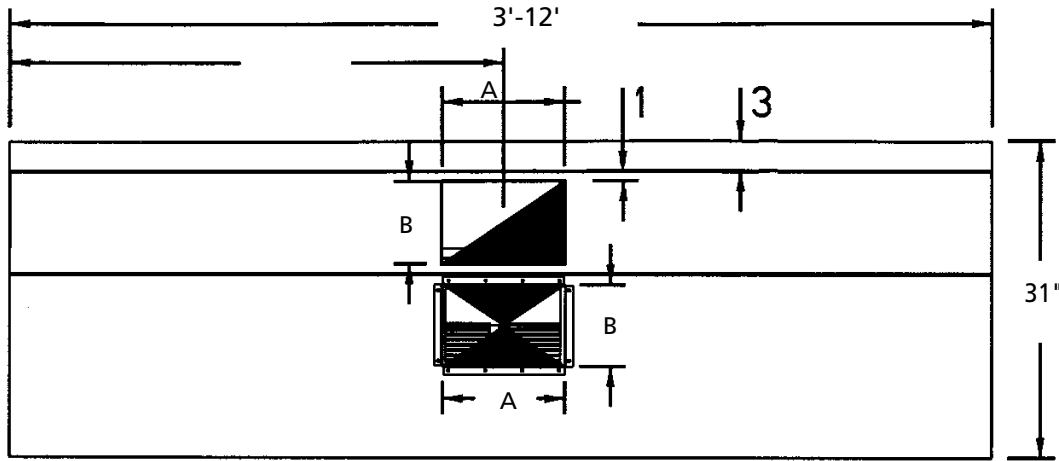
- UL Listed Aluminum Grease Filters
- Removable Grease Trough & Cup
- Integral 3" Rear Standoff
- Wall or Base Mount Design
- Extruded Aluminum Make-up Air Diffusers
- UL Listed Fire and Air Volume Dampers in Supply Collar
- Stainless Steel Construction



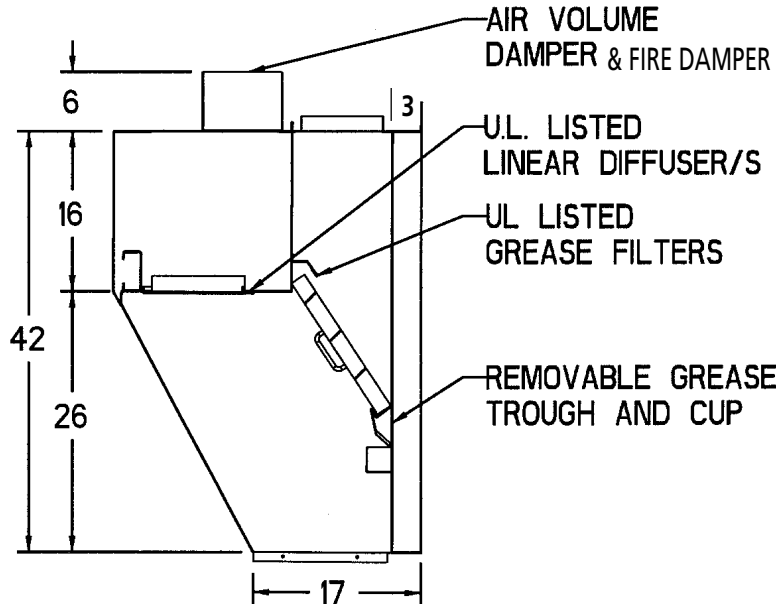
CAS Series - Make-up Air Low Side Wall Ventilator

BUILT IN ACCORDANCE WITH NFPA 96





Plan View



Section

EXHAUST AND SUPPLY RATE REQUIREMENTS

(Min. Exhaust Flow Rate)	TEMPERATURE OF EQUIPMENT		
	400°	600°	700°
CFM Exhaust / Ft.	300	350	-
CFM Supply / Ft.	150	150	-

ORDER ENTRY INFORMATION

Project:

Item:

Representative:

Model:

Length: Qty:

Width: Height:

Duct - Concentric
Parallel

Exhaust CFM:
Supply CFM:

Entered by:

Date:

Drawings Req'd: Y N

List Miscellaneous Options Separately

Duo-Aire®

Duo-Aire reserves the right to make changes in design and specifications without prior notice.

ENGINEERING WORKSHEET

CAS-PS SERIES 400°F. EQUIPMENT

Length in Ft.	Exhaust CFM 300/Ft.	Exhaust Collar A X B	Duct Velocity FPM	Filter Area Sq. Ft.	Filter Velocity FPM	Exhaust Static Pressure	Supply CFM	Supply Velocity FPM	Supply Static Pressure	Supply Collar A X B
3	900	12X6	1800	3.2	281	.75	450	180	.50	12x8
4	1200	12X8	1791	4.2	286	.75	600	180	.50	12x8
5	1500	16X8	1685	5.3	233	.75	750	180	.50	12x8
6	1800	18X8	1800	6.3	286	.75	900	180	.50	12x8
7	2100	20X8	1892	7.4	284	.75	1050	180	.50	24x8
8	2400	24X8	1805	8.4	286	.75	1200	180	.50	24x8
9	2700	28X8	1731	9.5	284	.75	1350	180	.50	24x8
10	3000	30X8	1796	10.5	286	.75	1500	180	.50	(2)24x8
11	3300	32X8	1854	11.6	284	.75	1650	180	.50	(2)24x8
12	3600	36X8	1800	12.6	286	.75	1800	180	.50	(2)24X8

CAS-PS SERIES 600°F. EQUIPMENT

Length in Ft.	Exhaust CFM 350/Ft.	Exhaust Collar A X B	Duct Velocity FPM	Filter Area Sq. Ft.	Filter Velocity FPM	Exhaust Static Pressure	Supply CFM	Supply Velocity FPM	Supply Static Pressure	Supply Collar A X B
3	1050	10X8	1875	3.2	328	1.0	450	210	.50	12x8
4	1400	14X8	1795	4.2	333	1.0	600	210	.50	12x8
5	1750	18X8	1750	5.3	330	1.0	750	210	.50	24x8
6	2100	20X8	1892	6.3	333	1.0	950	210	.50	24x8
7	2450	24X8	1842	7.4	331	1.0	1050	210	.50	24x8
8	2800	28X8	1795	8.4	333	1.0	1200	210	.50	24x8
9	3150	32X8	1770	9.5	332	1.0	1350	210	.50	24x8
10	3500	36X8	1750	10.5	333	1.0	1500	210	.50	(2)24x8
11	3850	38X8	1824	11.6	332	1.0	1650	210	.50	(2)24x8
12	4200	42X8	1800	12.6	333	1.0	1800	210	.50	(2)24x8

ENGINEERING WORKSHEET

CAS SERIES

400°F. EQUIPMENT

Length in Ft.	Exhaust CFM 300/Ft.	Exhaust Collar A X B	Duct Velocity FPM	Filter Area Sq. Ft.	Filter Velocity FPM	Exhaust Static Pressure	Supply CFM	Supply Velocity FPM	Supply Static Pressure	Supply Collar A X B
3	900	12X6	1800	3.2	281	.75	450	180	.50	12x8
4	1200	12X8	1791	4.2	286	.75	600	180	.50	12x8
5	1500	16X8	1685	5.3	233	.75	750	180	.50	12x8
6	1800	18X8	1800	6.3	286	.75	900	180	.50	12x8
7	2100	20X8	1892	7.4	284	.75	1050	180	.50	24x8
8	2400	24X8	1805	8.4	286	.75	1200	180	.50	24x8
9	2700	28X8	1731	9.5	284	.75	1350	180	.50	24x8
10	3000	30X8	1796	10.5	286	.75	1500	180	.50	(2)24x8
11	3300	32X8	1854	11.6	284	.75	1650	180	.50	(2)24x8
12	3600	36X8	1800	12.6	286	.75	1800	180	.50	(2)24x8

CAS SERIES

600°F. EQUIPMENT

Length in Ft.	Exhaust CFM 350/Ft.	Exhaust Collar A X B	Duct Velocity FPM	Filter Area Sq. Ft.	Filter Velocity FPM	Exhaust Static Pressure	Supply CFM	Supply Velocity FPM	Supply Static Pressure	Supply Collar A X B
3	1050	10X8	1875	3.2	328	1.0	450	210	.50	12x8
4	1400	14X8	1795	4.2	333	1.0	600	210	.50	12x8
5	1750	18X8	1750	5.3	330	1.0	750	210	.50	24x8
6	2100	20X8	1892	6.3	333	1.0	900	210	.50	24x8
7	2450	24X8	1842	7.4	331	1.0	1050	210	.50	24x8
8	2800	28X8	1795	8.4	333	1.0	1200	210	.50	24x8
9	3150	32X8	1770	9.5	332	1.0	1350	210	.50	24x8
10	3500	36X8	1750	10.5	333	1.0	1500	210	.50	(2)24x8
11	3850	38X8	1824	11.6	332	1.0	1650	210	.50	(2)24x8
12	4200	42X8	1800	12.6	333	1.0	1800	210	.50	(2)24x8