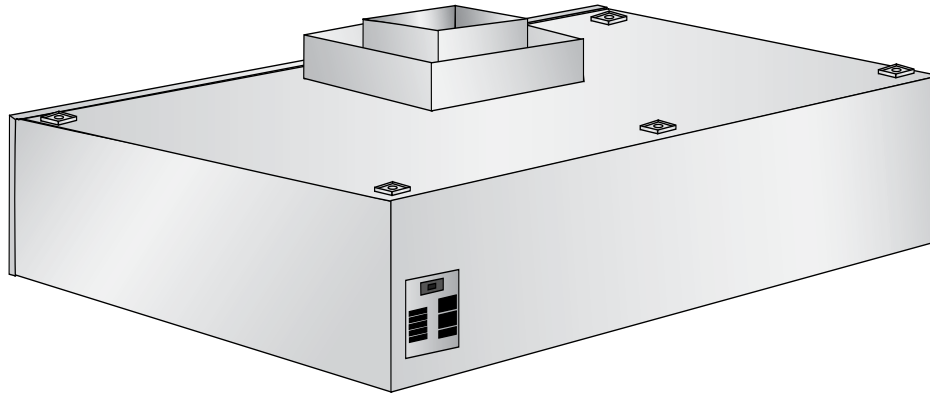


Duo-Aire

® CW

Double Plenum Vertical Air Curtain Wall Hood



Model CW

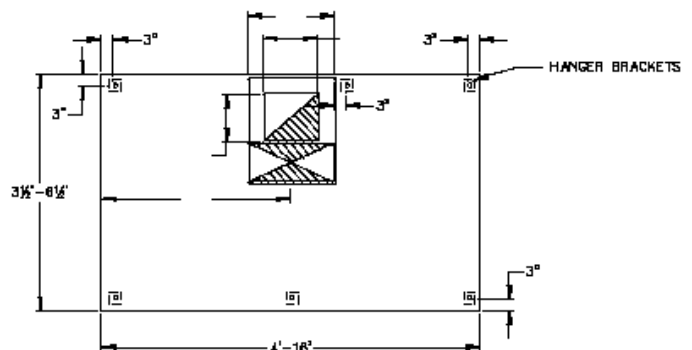
A double plenum vertical air curtain wall ventilator. Both the exhaust and supply shells shall be fully welded, with an integral supply air plenum along the back, top and front of the ventilator. Ventilator shall be constructed of stainless steel where visible and aluminized steel where concealed. The make up air curtain shall be of the low velocity high volume design and shall include adjustable airfoil louvers for directional control of the air curtain. Air curtain shall not exceed 325 feet per minute discharge velocity. The supply air plenum shall contain integral perforated plates to equalize supply air flow along the total length of the supply air slot. Ventilator shall be complete with exhaust collar and supply air collar with UL fire damper. All external seams shall be fluid welded and ground/polished to match ventilator finish. Ventilator to be listed to meet NSF and UL 710 standards and constructed to meet NFPA-96 requirements. Grease trough to be easily removable and sloped to removable grease cup.

STANDARD FEATURES

- Vertical Air Curtain Supply Air Discharge
- Double Shell Construction
- 300 Series Stainless Steel Construction
- UL Listed Aluminum Grease Filters
- UL Listed Pre-Wired Incandescent Lights
- Flush Mounted Control Panel
- Removable Grease Trough and Cup
- UL Listed Supply Fire Damper
- Concentric or Parallel Duct Collars Installed

OPTIONS

- UL Listed Stainless Steel Grease Filters
- UL Listed Fluorescent Lights
- UL Listed Insulated Top, Back and/or Ends for Zero Clearance to Combustible
- 14" Deep Fire Protection Cabinet
- 400 Stainless Steel Where Exposed
- 18 Gauge Aluminized Steel, Painted Exterior
- Aluminized Steel Painted, Stainless Steel Liner
- Full-Integrated Duct and Rooftop Package
- Supply Air Foil Directional Louvers



PLAN VIEW

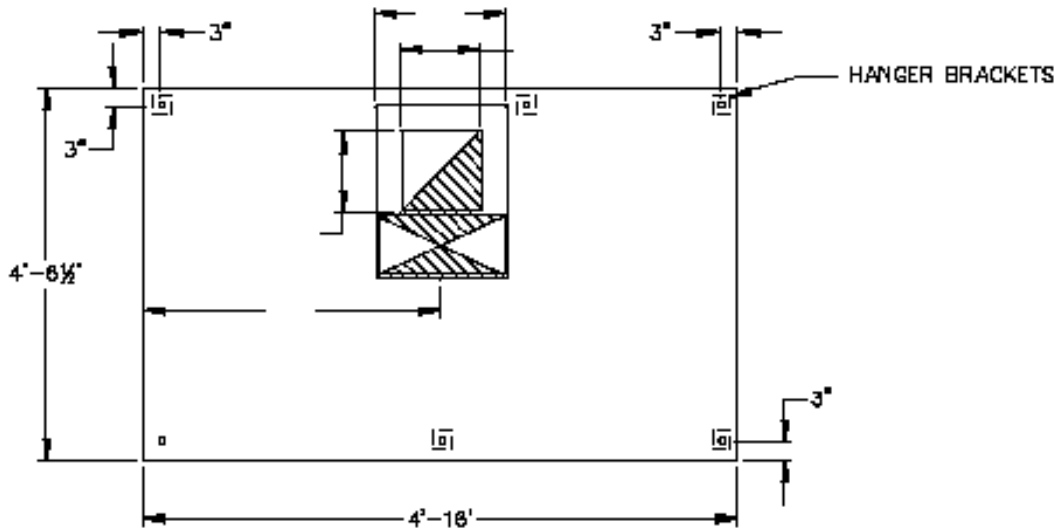
(See reverse side for larger drawing)
Note: Double Collars Required over 14"

BUILT IN
ACCORDANCE
WITH NFPA 96



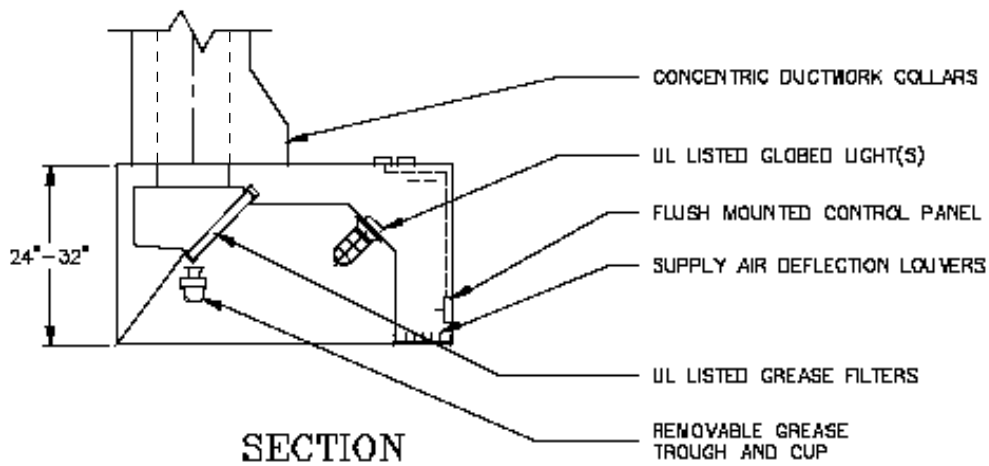
UL # MH 11667 HOODS WITHOUT EXHAUST DAMPERS
UL # MH 10301 HOODS WITH EXHAUST DAMPERS

CW Double Plenum Vertical Air Curtain Wall Hood



PLAN VIEW

Note: Double Collars Required over 14'



SECTION

ORDER ENTRY INFORMATION

Project:

Item:

Representative:

Model:

Length: Qty:

Width:
Height:

Duct - Concentric
Parallel

Exhaust CFM:
Supply CFM:

Entered by:

Date:

Drawings Req'd: Y N

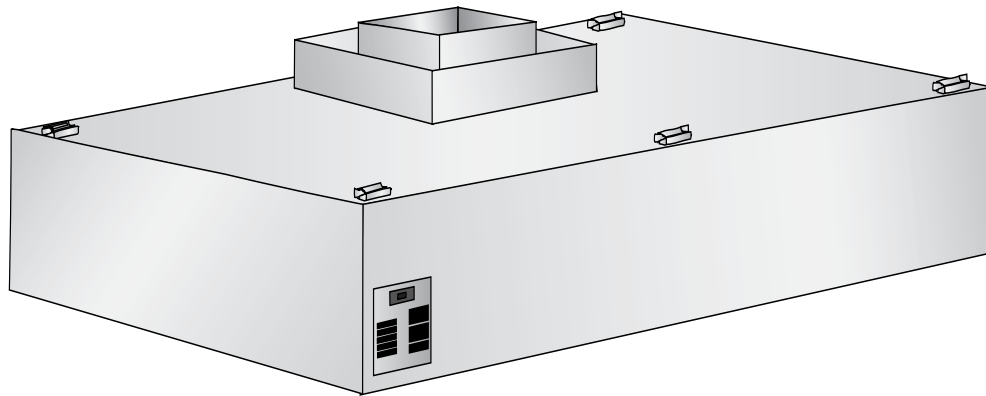
List Miscellaneous Options Separately

Duo-Aire®

Duo-Aire reserves the right to make changes in design and specifications without prior notice.

Duo-Aire[®]

CSI Double Plenum Vertical Air Curtain Island Hood



Model CSI

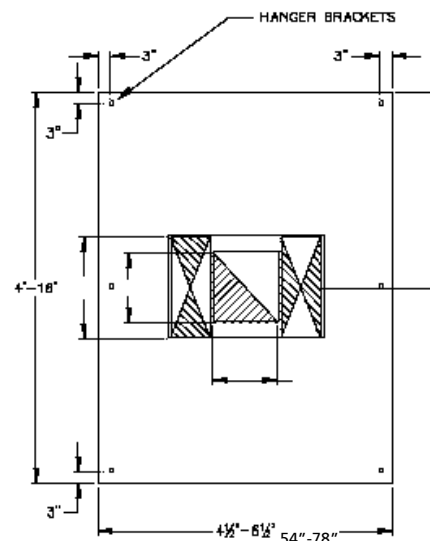
A double plenum vertical air curtain Single Island ventilator. Both the exhaust and supply shells shall be fully welded, with an integral supply air plenum along the full top and both fronts. Ventilator shall be constructed as one module. Ventilator shall be constructed of stainless steel where visible and aluminized steel where concealed. The make up air curtain shall be of the low velocity high volume design and shall include adjustable airfoil louvers for directional control of the air curtain. The supply air curtains shall be the full length of the ventilator, both sides. Air curtain shall not exceed 325 feet per minuter discharge velocity. The supply air plenums shall contain integral perforated plates to equalize supply air flow along the total length of the supply air slot. Ventilator shall be complete with exhaust collar and supply air collars with UL fire damper. All external seams shall be fluid welded and ground/polished to match ventilator finish. Ventilator to be listed to meet NSF and UL 710 Standards and constructed to meet NFPA-96 requirements. Grease trough to be easily removable and sloped to removable grease cup.

STANDARD FEATURES

- Vertical Air Curtain Supply Air Discharge
- Double Shell Construction
- 300 Series Stainless Steel Construction
- UL Listed Aluminum Grease Filters - V Filter Bank
- UL Listed Pre-Wired Incandescent Lights
- Flush Mounted Control Panel
- Removable Grease Trough and Cup
- UL Listed Supply Fire Dampers
- Concentric or Parallel Duct Collars Installed

OPTIONS

- UL Listed Stainless Steel Grease Filters
- UL Listed Fluorescent Lights
- 14" Deep Fire Protection Cabinet
- 400 Stainless Steel where exposed
- 18 Gauge Aluminized Steel, Painted Exterior
- Aluminized Steel Painted, Stainless Steel Interior
- Full-Integrated Duct and Rooftop Package
- Supply Air Foil Directional Louvers



PLAN VIEW

(See reverse side for larger drawing)

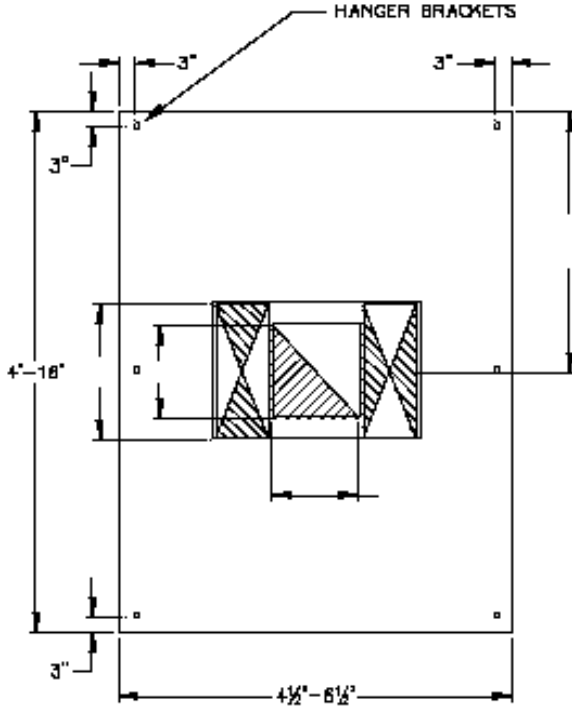
Note: DoubleCollars Required over 14'.

BUILT IN
ACCORDANCE
WITH NFPA 96



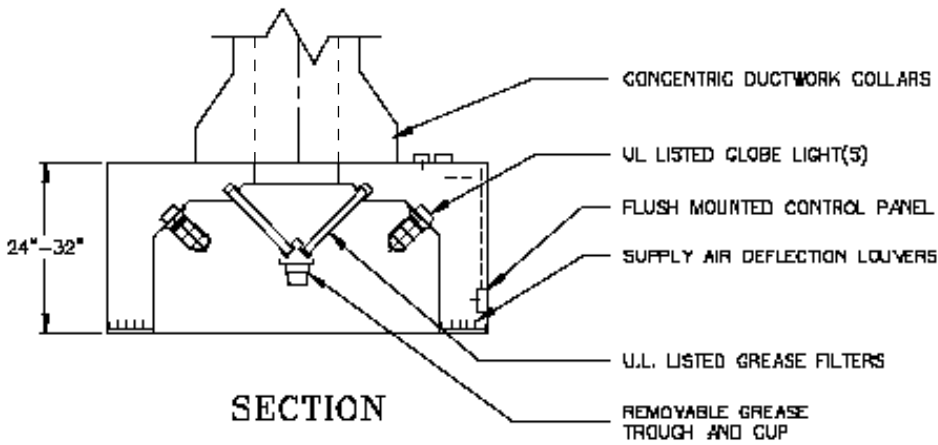
UL # MH 11667 HOODS WITHOUT EXHAUST DAMPERS
UL # MH 10301 HOODS WITH EXHAUST DAMPERS

CSI Series - Double Plenum Vertical Air Curtain Island Hood



PLAN VIEW

Note: DoubleCollars Required over 14'



SECTION

ORDER ENTRY INFORMATION

Project:

Item:

Representative:

Model:

Length: Qty:

Width:
Height:

Duct - Concentric
Parallel

Exhaust CFM:
Supply CFM:

Entered by:

Date:

Drawings Req'd: Y N

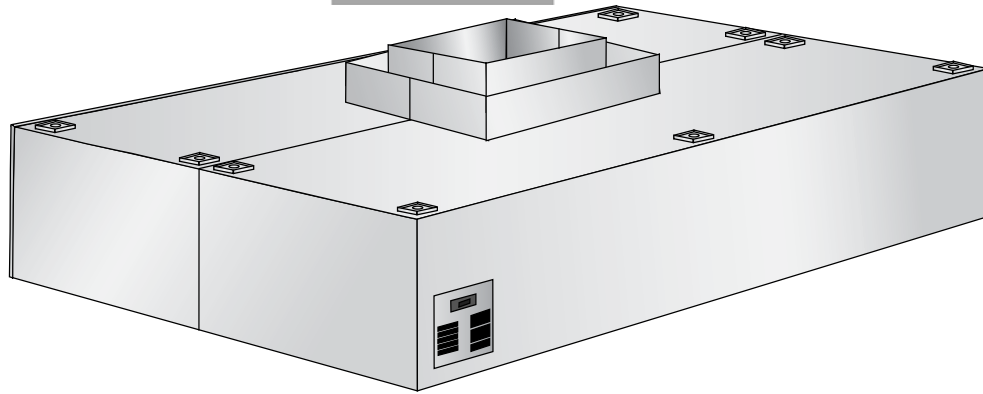
List Miscellaneous Options Separately

Duo-Aire[®]

Duo-Aire reserves the right to make changes in design and specifications without prior notice.

Duo-Aire®

CI Double Plenum Vertical Air Curtain Island Hood



Model CI

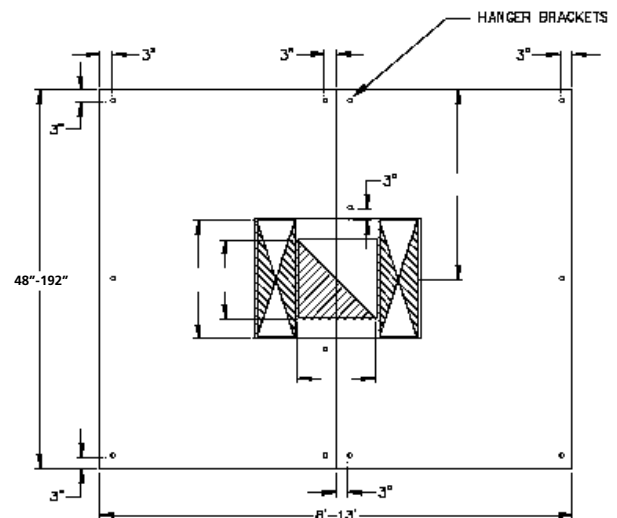
A double plenum vertical air curtain Double Island ventilator. Constructed in two modules, to be mated back to back at time of installation. Both the exhaust and supply shells shall be fully welded, with an integral supply air plenum along the full top and both fronts. Ventilator shall be constructed of stainless steel where visible and aluminized steel where concealed. The make up air curtain shall be of the low velocity high volume design and shall include adjustable airfoil louvers for directional control of the air curtain. The supply air curtains shall be the full length of the ventilator, both sides. Air curtain shall not exceed 325 feet per minuter discharge velocity. The supply air plenums shall contain integral perforated plates to equalize supply air flow along the total length of the supply air slot. Ventilator shall be complete with exhaust collar and supply air collars with UL fire damper. All external seams shall be fluid welded and ground/polished to match ventilator finish. Ventilator to be listed to meet NSF and UL 710 Standards and constructed to meet NFPA-96 requirements. Grease trough to be easily removable and sloped to removable grease cup.

STANDARD FEATURES

- Vertical Air Curtain Supply Air Discharge
- Double Shell Construction
- 300 Series Stainless Steel Construction
- UL Listed Aluminum Grease Filters - V Filter Bank
- UL Listed Pre-Wired Incandescent Lights
- Flush Mounted Control Panel
- Removable Grease Trough and Cup
- UL Listed Supply Fire Dampers
- Concentric or Parallel Duct Collars Installed

OPTIONS

- UL Listed Stainless Steel Grease Filters
- UL Listed Fluorescent Lights
- 14" Deep Fire Protection Cabinet
- 400 Stainless Steel where exposed
- 18 Gauge Aluminized Steel, Painted Exterior
- Aluminized Steel Painted, Stainless Steel Interior
- Full-Integrated Duct and Rooftop Package
- Supply Air Foil Directional Louvers



PLAN VIEW

(See reverse side for larger drawing)

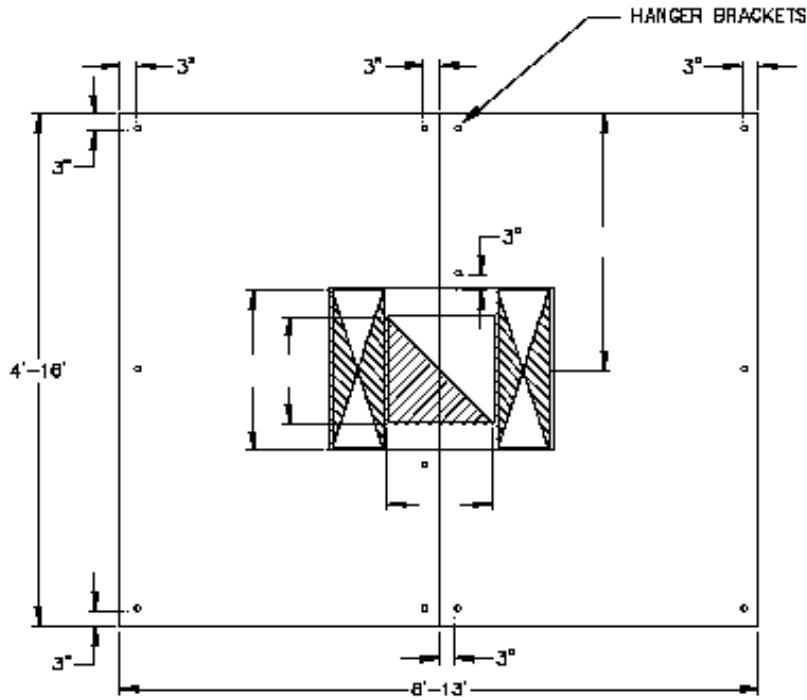
Note: DoubleCollars Required over 14'

BUILT IN
ACCORDANCE
WITH NFPA 96



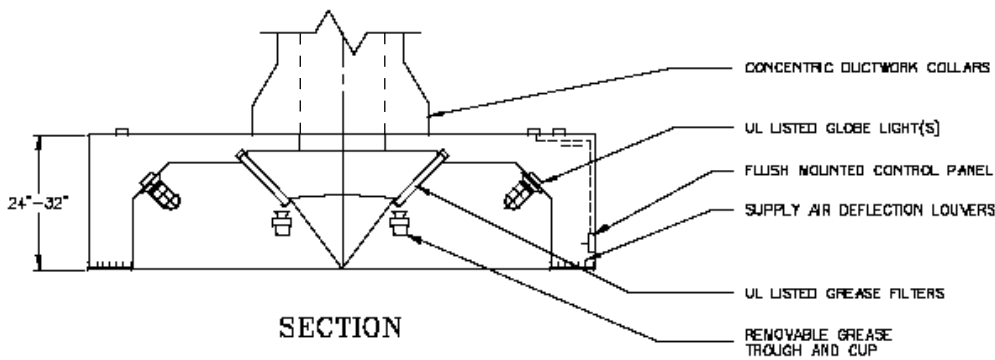
UL # MH 11667 HOODS WITHOUT EXHAUST DAMPERS
UL # MH 10301 HOODS WITH EXHAUST DAMPERS

CI Series - Double Plenum Vertical Air Curtain Island Hood



PLAN VIEW

Note: DoubleCollars Required over 14'



SECTION

ORDER ENTRY INFORMATION

Project:

Item:

Representative:

Model:

Length: Qty:

Width:
Height:

Duct - Concentric
Parallel

Exhaust CFM:
Supply CFM:

Entered by:

Date:

Drawings Req'd: Y N

List Miscellaneous
Options Separately

Duo-Aire®

Duo-Aire reserves the right to make changes in design and specifications without prior notice.

ENGINEERING WORKSHEET

MODEL CW

MODEL NUMBER	EXHAUST CFM	SUPPLY CFM	EXHAUST COLLAR	SUPPLY DUCT	
				CONCENTRIC	PARALLEL
CW-48	960	844	9 x 9	17 x 17	10 x 18
CW-60	1200	1055	10 x 10	18 x 18	10 x 18
CW-72	1440	1266	11 x 11	19 x 19	10 x 18
CW-84	1680	1477	12 x 12	20 x 20	10 x 18
CW-96	1920	1688	13 x 13 *12 x 14	21 x 21 *20 x 22	10 x 18
CW-108	2160	1899	13 x 14 *12 x 15	21 x 22 *20 x 23	10 x 30
CW-120	2400	2110	14 x 15 *12 x 17	22 x 23 *20 x 25	10 x 30
CW-132	2640	2321	15 x 15 *12 x 19	23 x 23 *20 x 27	10 x 30
CW-144	2880	2532	15 x 16 *12 x 21	23 x 24 *20 x 29	10 x 30
CW-156	3120	2743	16 x 17 *12 x 22	24 x 25 *20 x 30	10 x 30
CW-168	3360	2954	17 x 17 *12 x 24	25 x 25 *20 x 32	10 x 30
CW-180	3600	3165	2) 12 x 13	2) 20 x 21	2) 10 x 18
CW-192	3840	3376	2) 12 x 14	2) 20 x 22	2) 10 x 18

NOTE: Minimum overhang of 6" at hood front and ends. CFM may vary based on actual cooking equipment design.

* Denotes collar size for 24" high hood. Others are for 32" high hood.

ENGINEERING WORKSHEET

MODEL CSI

MODEL NUMBER	EXHAUST CFM	SUPPLY CFM	EXHAUST COLLAR	SUPPLY DUCT	
				CONCENTRIC	PARALLEL
CFI-48	1600	1408	11 x 12	19 x 20	2) 10 x 18
CFI-60	2000	1760	13 x 13	21 x 21	2) 10 x 18
CFI-72	2400	2112	14 x 15	22 x 23	2) 10 x 18
CFI-84	2800	2464	15 x 16	23 x 24	2) 10 x 18
CFI-96	3200	2816	16 x 17	24 x 25	2) 10 x 18
CFI-108	3600	3168	17 x 18	25 x 26	2) 10 x 30
CFI-120	4000	3520	18 x 19	26 x 27	2) 10 x 30
CFI-132	4400	3872	19 x 20	27 x 28	2) 10 x 30
CFI-144	4800	4224	20 x 21	30 x 31	2) 10 x 30
CFI-156	5200	4576	20 x 22	30 x 32	2) 10 x 30
CFI-168	5600	4928	20 x 24	30 x 34	2) 10 x 30
CFI-180	6000	5280	2) 16 x 16	2) 26 x 24	4) 10 x 18
CFI-192	6400	5632	2) 16 x 17	2) 26 x 25	4) 10 x 18

NOTE: Minimum overhang of 6" at hood front and ends. CFM may vary based on actual cooking equipment design.

ENGINEERING WORKSHEET

MODEL CI

MODEL NUMBER	EXHAUST CFM	SUPPLY CFM	EXHAUST COLLAR	SUPPLY DUCT	
				CONCENTRIC	PARALLEL
CI-48	2400	2112	14 x 15	22 x 23	2) 10 x 18
CI-60	3000	2640	16 x 16	24 x 24	2) 10 x 18
CI-72	3600	3168	17 x 18	25 x 26	2) 10 x 18
CI-84	4200	3696	19 x 19	27 x 27	2) 10 x 18
CI-96	4800	4224	20 x 20	30 x 30	2) 10 x 18
CI-108	5400	4752	21 x 22	31 x 32	2) 10 x 30
CI-120	6000	5280	22 x 23	32 x 33	2) 10 x 30
CI-132	6600	5808	24 x 24	34 x 34	2) 10 x 30
CI-144	7200	6336	25 x 25	35 x 35	2) 10 x 30
CI-156	7800	6864	26 x 26	36 x 36	2) 10 x 30
CI-168	8400	7392	27 x 27	37 x 37	2) 10 x 30
CI-180	9000	7920	2) 19 x 20	2) 27 x 28	4) 10 x 18
CI-192	9600	8448	2) 20 x 20	2) 30 x 30	4) 10 x 18

NOTE: Minimum overhang of 6" at hood front and ends. CFM may vary based on actual cooking equipment design.