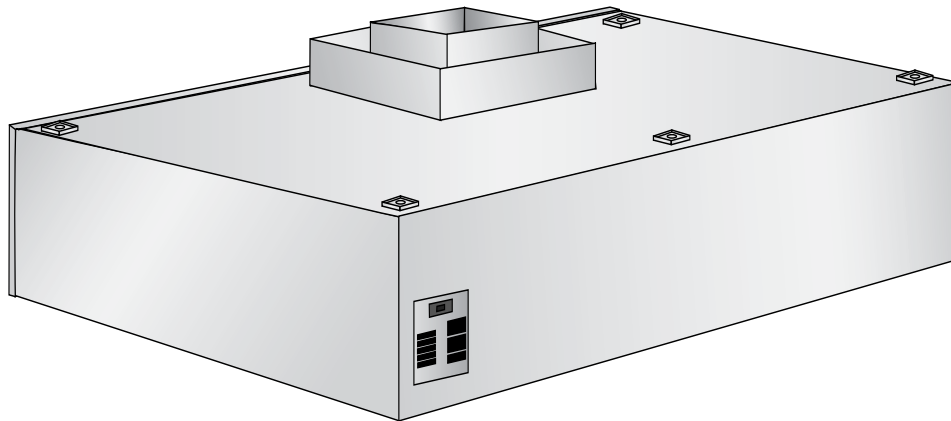


# Duo-Aire

® CW-III

## Double Plenum Short Circuit Wall Hood



### Model CW-III

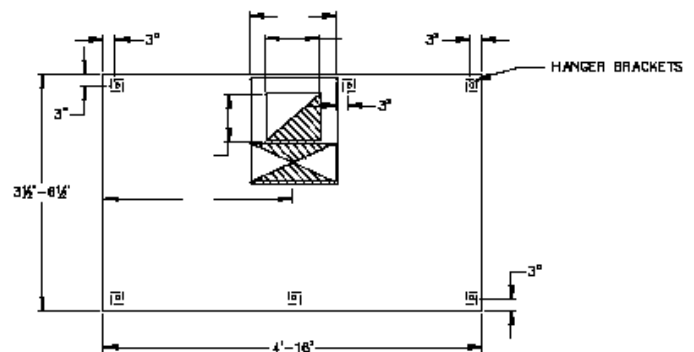
A double plenum short circuit wall ventilator. Both the exhaust and supply shells shall be fully welded, with an integral supply air plenum along the back, top and front of the ventilator. Supply air plenum shall be insulated to prevent formation of condensation. Insulation shall be UL listed for application. Ventilator shall be constructed of stainless steel where visible and aluminized steel where concealed. The make up shall be directed into the exhaust cavity of the ventilator. The supply air plenum shall contain integral perforated plates to equalize supply air flow along the total length of the supply air slot. Ventilator shall be complete with exhaust collar and supply air collar with UL fire damper. All external seams shall be fluid welded and ground/polished to match ventilator finish. Ventilator to be listed to meet NSF and UL 710 Standards and constructed to meet NFPA-96 requirements. Grease trough to be easily removable and sloped to meet NFPA-96 requirements. Grease trough to be easily removable and sloped to removable grease cup.

### STANDARD FEATURES

- Double Shell Construction
- 300 Series Stainless Steel Construction
- Insulated Supply Air Plenum
- UL Listed Aluminum Grease Filters
- UL Listed Pre-Wired Incandescent Lights
- Flush Mounted Control Panel
- Removable Grease Trough and Cup
- UL Listed Supply Fire Damper
- Concentric or Parallel Duct Collars Installed

### OPTIONS

- UL Listed Stainless Steel Grease Filters
- UL Listed Fluorescent Lights
- UL Listed Insulated Top, Back and/or Ends for Zero Clearance to Combustible
- 14" Deep Fire Protection Cabinet
- 400 Stainless Steel Where Exposed
- 18 Gauge Aluminized Steel, Painted Exterior
- Aluminized Steel Painted, Stainless Steel Liner
- Full-Integrated Duct and Rooftop Package



PLAN VIEW

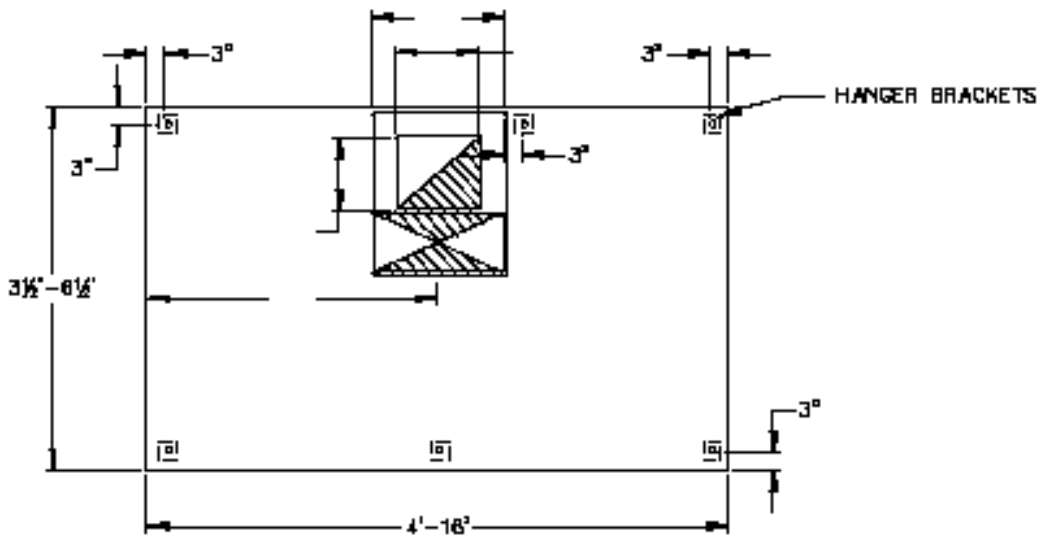
(See reverse side for larger drawing)

BUILT IN  
ACCORDANCE  
WITH NFPA 96



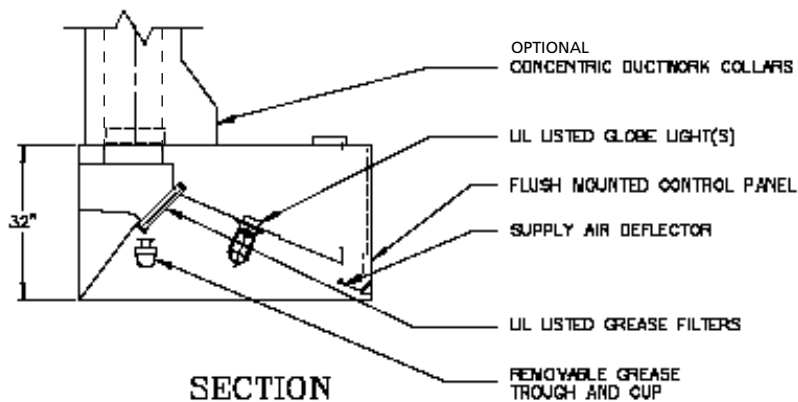
UL # MH 11667 HOODS WITHOUT EXHAUST DAMPERS  
UL # MH 10301 HOODS WITH EXHAUST DAMPERS

CW-III Double Plenum Short Circuit Wall Hood



PLAN VIEW

Note: DoubleCollars Required over 14'



SECTION

ORDER ENTRY INFORMATION

Project:

Item:

Representative:

Model:

Length: Qty:

Width:  
Height:

Duct - Concentric   
Parallel

Exhaust CFM:  
Supply CFM:

Entered by:

Date:

Drawings Req'd: Y N

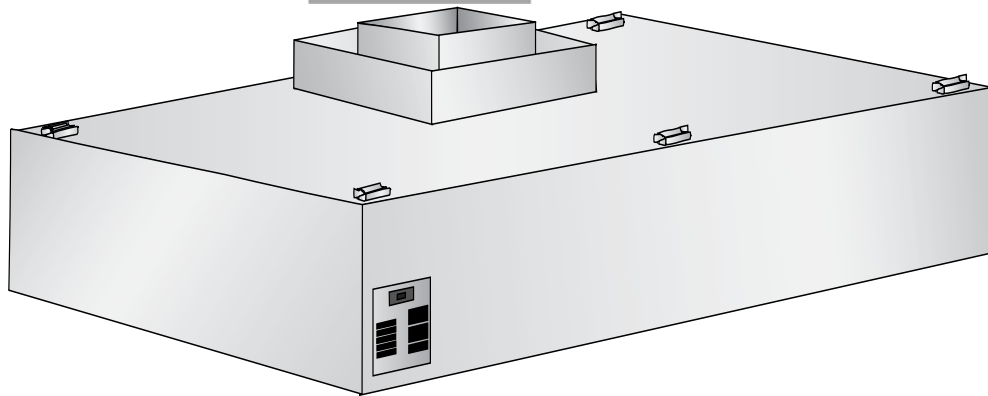
List Miscellaneous  
Options Separately

**Duo-Aire**®

Duo-Aire reserves the right to make changes in design and specifications without prior notice.

# Duo-Aire<sup>®</sup>

## CSI-III Double Plenum Short Circuit Single Island Hood



### Model CSI-III

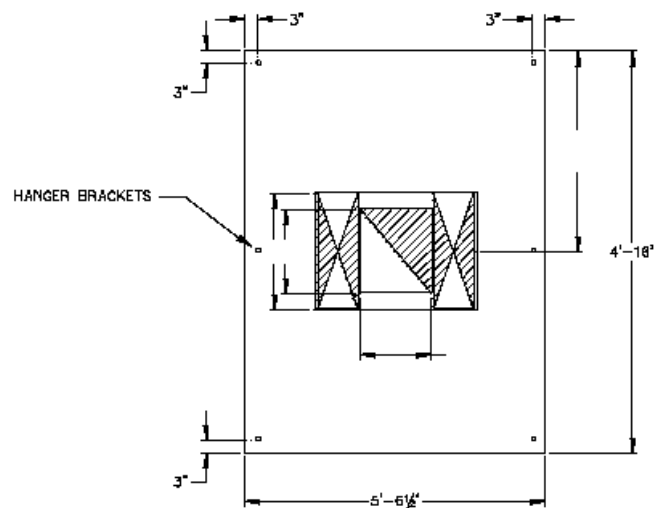
A double plenum short circuit Single Island ventilator. Both the exhaust and supply shells shall be fully welded, with an integral supply air plenum along the full top and both fronts. Supply air plenum shall be insulated to prevent formation of condensation. Insulation shall be UL listed for application. Ventilator shall be constructed as one module. Ventilator shall be constructed of stainless steel where visible and aluminized steel where concealed. The make up air shall be directed into the exhaust cavity of the ventilator. The supply air plenums shall contain integral perforated plates to equalize supply air flow along the total length of the supply air slots. Ventilator shall be complete with exhaust collar and supply air collars with UL fire dampers. All external seams shall be fluid welded and ground/polished to match ventilator finish. Ventilator to be listed to meet NSF and UL 710 Standards and constructed to meet NFPA-96 requirements. Grease trough to be easily removable and sloped to meet NFPA-96 requirements. Grease trough to be easily removable and sloped to removable grease cup.

### STANDARD FEATURES

- Double Shell Construction
- 300 Stainless Steel Construction
- Insulated Supply Air Plenum
- UL Listed Aluminum Grease Filters - V Filter Bank
- UL Listed Pre-Wired Incandescent Lights
- Flush Mounted Control Panel
- Removable Grease Trough and Cup
- UL Listed Supply Fire Dampers
- Concentric or Parallel Duct Collars Installed

### OPTIONS

- UL Listed Stainless Steel Grease Filters
- UL Listed Fluorescent Lights
- UL Listed Insulated Top and/or Ends for Zero Clearance to Combustible
- 14" Deep Fire Protection Cabinet
- 400 Stainless Steel Where Exposed
- 18 Gauge Aluminized Steel, Painted Exterior
- Aluminized Steel Painted, Stainless Steel Liner
- Full-Integrated Duct and Rooftop Package



PLAN VIEW

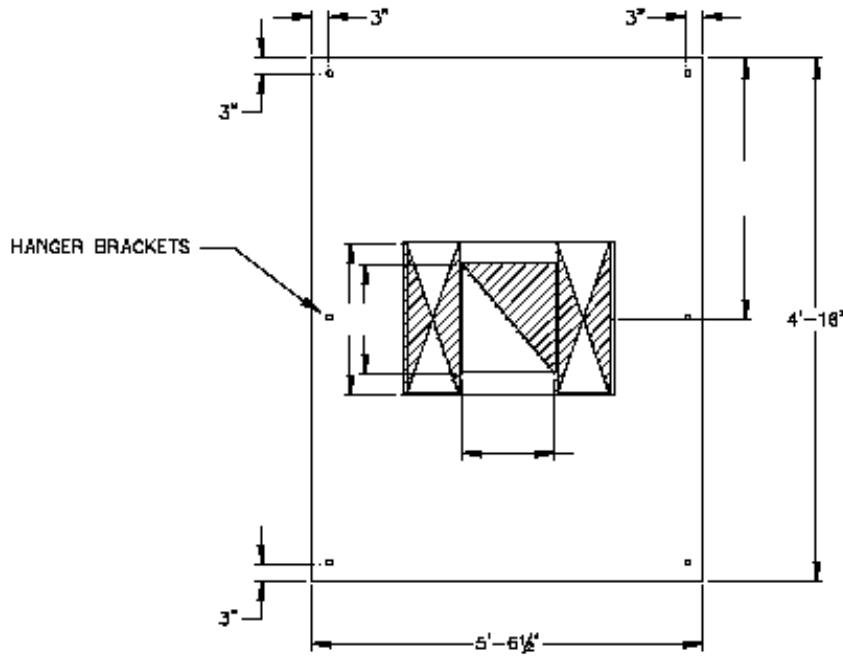
(See reverse side for larger drawing)

BUILT IN  
ACCORDANCE  
WITH NFPA 96



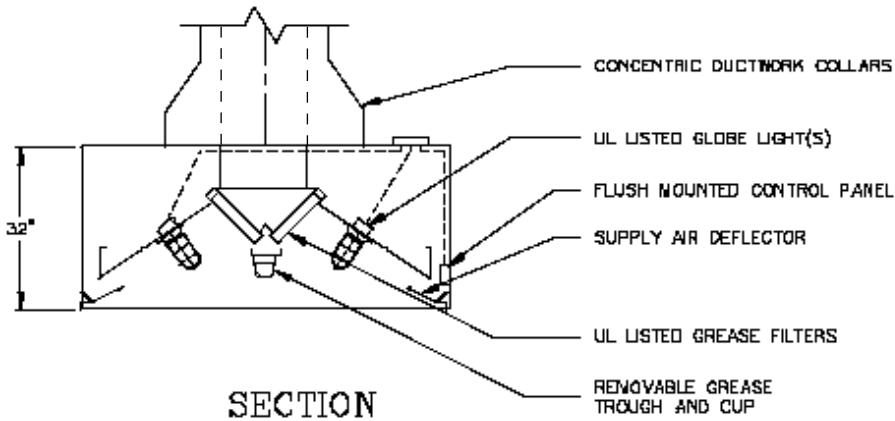
UL # MH 11667 HOODS WITHOUT EXHAUST DAMPERS  
UL # MH 10301 HOODS WITH EXHAUST DAMPERS

CSI-III Series - Double Plenum Short Circuit Single Island Hood



**PLAN VIEW**

Note: DoubleCollars Required over 14'



**SECTION**

**ORDER ENTRY INFORMATION**

Project:

Item:

Representative:

Model:

Length: Qty:

Width:  
Height:

Duct - Concentric   
Parallel

Exhaust CFM:  
Supply CFM:

Entered by:

Date:

Drawings Req'd: Y N

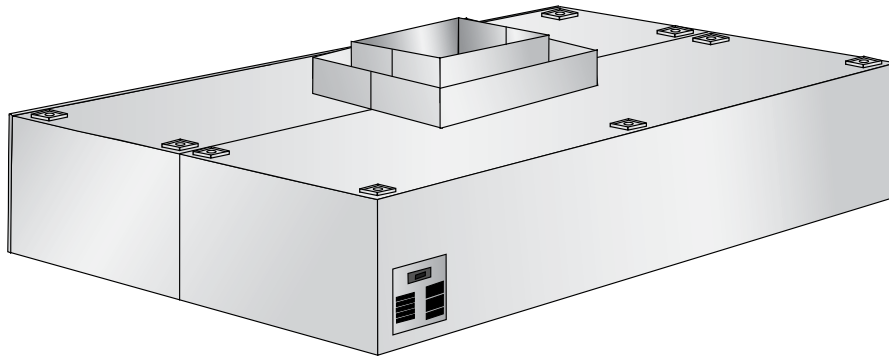
List Miscellaneous Options Separately

**Duo-Aire**<sup>®</sup>

Duo-Aire reserves the right to make changes in design and specifications without prior notice.

# Duo-Aire<sup>®</sup>

## CI-III Double Plenum Short Circuit Double Island Hood



### Model CI-III

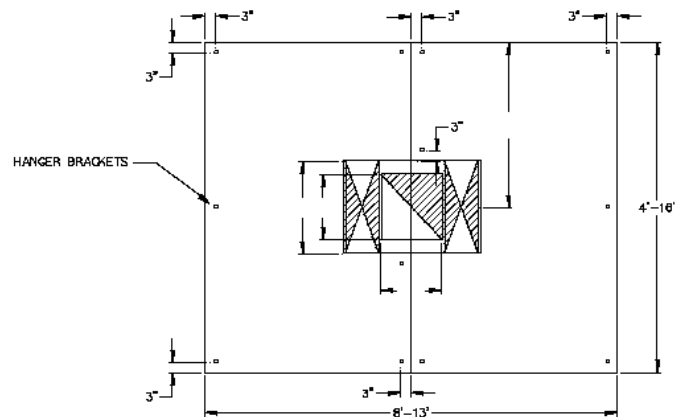
A double plenum short circuit Double Island ventilator. Constructed in two modules to be mated back to back at time of installation. Both the exhaust and supply shells shall be fully welded, with an integral supply air plenum along the full top and both fronts. Supply air plenum shall be insulated to prevent formation of condensation. Insulation shall be UL listed for application. Ventilator shall be constructed as one module. Ventilator shall be constructed of stainless steel where visible and aluminized steel where concealed. The make up air shall be directed into the exhaust cavity of the ventilator. The supply air plenums shall contain integral perforated plates to equalize supply air flow along the total length of the supply air slots. Ventilator shall be complete with exhaust collar and supply air collars with UL fire dampers. All external seams shall be fluid welded and ground/polished to match ventilator finish. Ventilator to be listed to meet NSF and UL 710 Standards and constructed to meet NFPA-96 requirements. Grease trough to be easily removable and sloped to meet NFPA-96 requirements. Grease trough to be easily removable and sloped to removable grease cup.

### STANDARD FEATURES

- Double Shell Construction
- 300 Stainless Steel Construction
- Insulated Supply Air Plenum
- UL Listed Aluminum Grease Filters - V Filter Bank
- UL Listed Pre-Wired Incandescent Lights
- Flush Mounted Control Panel
- Removable Grease Trough and Cup
- UL Listed Supply Fire Dampers
- Concentric or Parallel Duct Collars Installed

### OPTIONS

- UL Listed Stainless Steel Grease Filters
- UL Listed Fluorescent Lights
- UL Listed Insulated Top and/or Ends for Zero Clearance to Combustible
- 14" Deep Fire Protection Cabinet
- 400 Stainless Steel Where Exposed
- 18 Gauge Aluminized Steel, Painted Exterior
- Aluminized Steel Painted, Stainless Steel Liner
- Full-Integrated Duct and Rooftop Package



PLAN VIEW

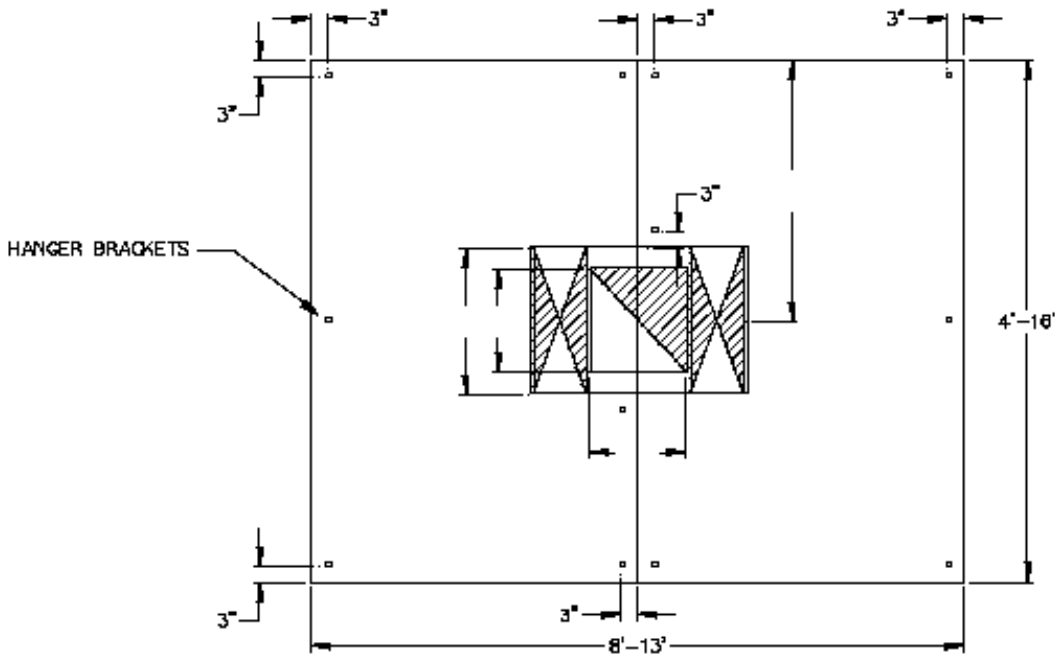
(See reverse side for larger drawing)

Note: DoubleCollars Required over 14'

BUILT IN  
ACCORDANCE  
WITH NFPA 96

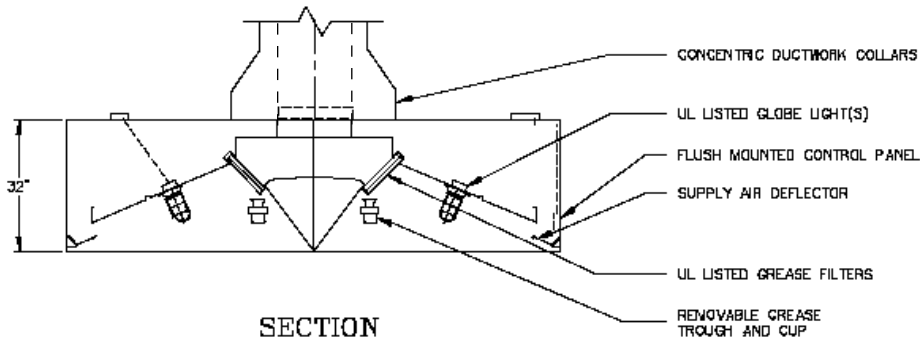


UL # MH 11667 HOODS WITHOUT EXHAUST DAMPERS  
UL # MH 10301 HOODS WITH EXHAUST DAMPERS



PLAN VIEW

Note: DoubleCollars Required over 14'



SECTION

ORDER ENTRY INFORMATION	
Project:	
Item:	
Representative:	
Model:	
Length:	Qty:
Width:	Height:
Duct -	Concentric <input type="checkbox"/> Parallel <input type="checkbox"/>
Exhaust CFM:	
Supply CFM:	
Entered by:	
Date:	
Drawings Req'd: Y N	
List Miscellaneous Options Separately	
<b>Duo-Aire</b> <sup>®</sup>	

Duo-Aire reserves the right to make changes in design and specifications without prior notice.

# ENGINEERING WORKSHEET

## MODEL CW-III

MODEL NUMBER	EXHAUST CFM	SUPPLY CFM	EXHAUST COLLAR	SUPPLY DUCT	
				CONCENTRIC	PARALLEL
CW-III-48	1000	UP TO 840	9 x 9	17 x 17	10 x 18
CW-III-60	1250	UP TO 1050	10 x 11	18 x 19	10 x 18
CW-III-72	1500	UP TO 1260	11 x 12	19 x 20	10 x 18
CW-III-84	1750	UP TO 1470	12 x 13	20 x 21	10 x 18
CW-III-96	2000	UP TO 1680	12 x 14	20 x 22	10 x 18
CW-III-108	2250	UP TO 1890	12 x 16	20 x 24	10 x 30
CW-III-120	2500	UP TO 2100	12 x 18	20 x 26	10 x 30
CW-III-132	2750	UP TO 2310	12 x 20	20 x 28	10 x 30
CW-III-144	3000	UP TO 2520	12 x 22	20 x 30	10 x 30
CW-III-156	3250	UP TO 3150	12 x 23	20 x 31	10 x 30
CW-III-168	3500	UP TO 3360	12 x 25	20 x 33	10 x 30
CW-III-180	3750	UP TO 3150	2) 12 x 13	2) 20 x 21	4) 10 x 18
CW-III-192	4000	UP TO 3360	2) 12 x 14	2) 20 x 22	4) 10 x 18

NOTE: Minimum overhang of 12" at hood front and ends. CFM may vary based on actual cooking equipment design.

# ENGINEERING WORKSHEET

## MODEL CSI-III

MODEL NUMBER	EXHAUST CFM	SUPPLY CFM	EXHAUST COLLAR	SUPPLY DUCT	
				CONCENTRIC	PARALLEL
CFI-III-48	2000	UP TO 1680	13 x 13	21 x 21	2) 10 x 18
CFI-III-60	2500	UP TO 2100	14 x 15	22 x 23	2) 10 x 18
CFI-III-72	3000	UP TO 2520	16 x 16	24 x 24	2) 10 x 18
CFI-III-84	3500	UP TO 2940	17 x 18	25 x 26	2) 10 x 18
CFI-III-96	4000	UP TO 3360	17 x 20	25 x 28	2) 10 x 18
CFI-III-108	4500	UP TO 3780	17 x 23	27 x 33	2) 10 x 30
CFI-III-120	5000	UP TO 4200	17 x 24	27 x 34	2) 10 x 30
CFI-III-132	5500	UP TO 4620	17 x 26	27 x 36	2) 10 x 30
CFI-III-144	6000	UP TO 5040	17 x 29	27 x 39	2) 10 x 30
CFI-III-156	6500	UP TO 5460	17 x 31	27 x 41	2) 10 x 30
CFI-III-168	7000	UP TO 5880	17 x 34	27 x 44	2) 10 x 30
CFI-III-180	7500	UP TO 6300	2) 17 x 19	2) 27 x 27	4) 10 x 18
CFI-III-192	8000	UP TO 6720	2) 17 x 20	2) 27 x 28	4) 10 x 18

NOTE: Minimum overhang of 12" at hood front and ends. CFM may vary based on actual cooking equipment design.



# ENGINEERING WORKSHEET

## MODEL CI-III

MODEL NUMBER	EXHAUST CFM	SUPPLY CFM	EXHAUST COLLAR	SUPPLY DUCT	
				CONCENTRIC	PARALLEL
CI-III-48	2000	UP TO 1680	13 x 13	21 x 21	2) 10 x 18
CI-III-60	2500	UP TO 2100	14 x 15	22 x 23	2) 10 x 18
CI-III-72	3000	UP TO 2520	16 x 16	24 x 24	2) 10 x 18
CI-III-84	3500	UP TO 2940	17 x 18	25 x 26	2) 10 x 18
CI-III-96	4000	UP TO 3360	18 x 19	26 x 27	2) 10 x 18
CI-III-108	4500	UP TO 3780	19 x 20	27 x 38	2) 10 x 30
CI-III-120	5000	UP TO 4200	20 x 21	30 x 31	2) 10 x 30
CI-III-132	5500	UP TO 4620	22 x 22	32 x 32	2) 10 x 30
CI-III-144	6000	UP TO 5040	22 x 23	32 x 33	2) 10 x 30
CI-III-156	6500	UP TO 5460	23 x 24	33 x 34	2) 10 x 30
CI-III-168	7000	UP TO 5880	24 x 25	34 x 35	2) 10 x 30
CI-III-180	7500	UP TO 6300	2) 18 x 18	2) 26 x 26	4) 10 x 18
CI-III-192	8000	UP TO 6720	2) 18 x 19	2) 26 x 27	4) 10 x 18

NOTE: Minimum overhang of 12" at hood front, back and ends. CFM may vary based on actual cooking equipment design.