

Model DW

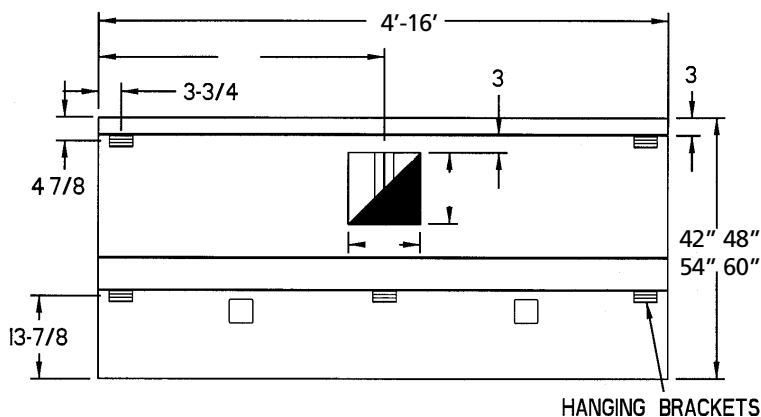
A single shell non-compensating exhaust only wall hung canopy constructed of stainless steel where visible and aluminized steel in concealed locations. All external seams shall be fluid welded, and internal seams shall be sealed with a high temp. silicone caulk. Canopy shall be Listed to meet NSF and UL 710 standards and constructed to meet NFPA-96. Grease trough to be easily removable and slope to removable grease cup.

STANDARD FEATURES

- UL Listed Aluminum Grease Filters
- UL Listed Globe Lights
- 3" Rear Air Space
- Removable Grease Trough & Cup
- Hanging Brackets
- Exhaust Collar Installed

OPTIONS

- All Stainless Steel Construction
- UL Listed Stainless Steel Grease Filters
- 14" Utility Cabinet for Fire Suppression System
- Electrical Control Panel
- Pre-Plumbed Fire Suppression
- Stainless Steel Top Enclosures
- Light Switch
- Fan Switch
- UL Listed Insulated Top, Back and/or Ends for Zero Clearance to Combustible



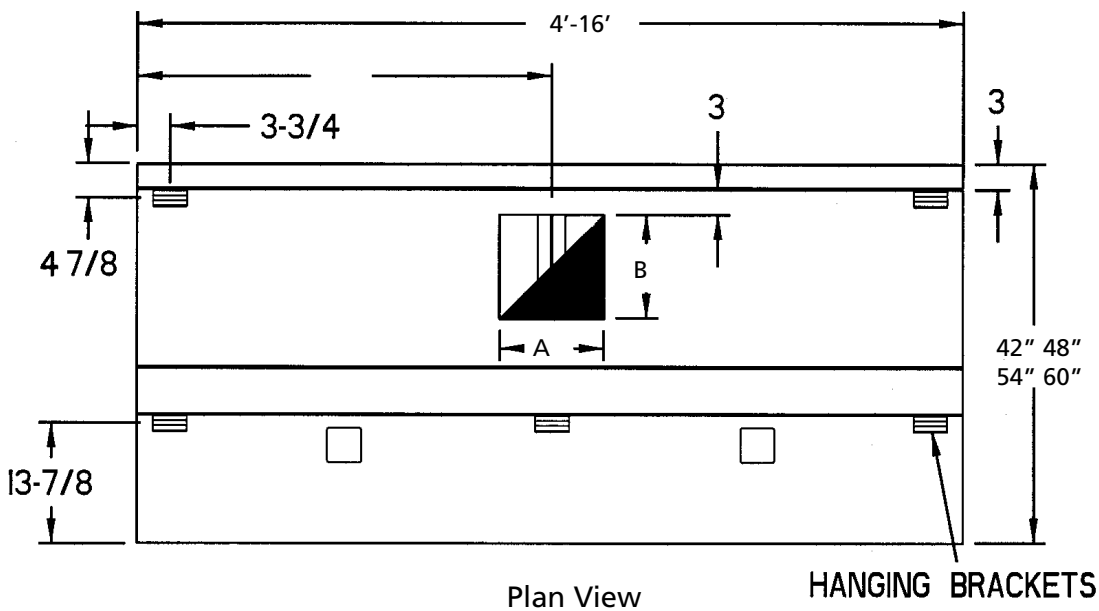
Plan View

(See reverse side for larger drawing)

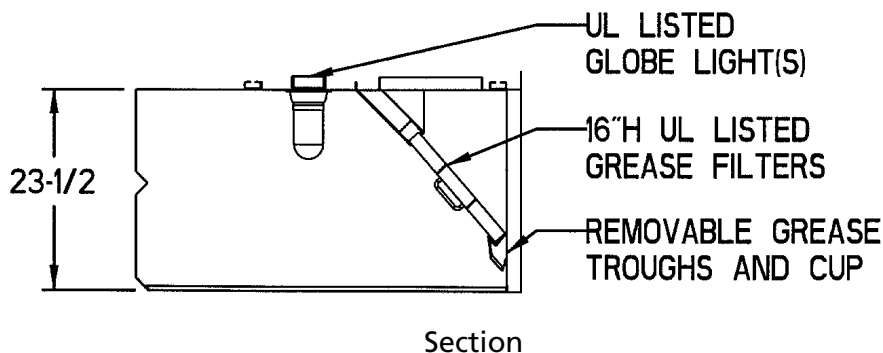
Note: Two exhaust ducts required after 12' long.

BUILT IN
ACCORDANCE
WITH NFPA 96





Note: Two exhaust ducts required after 12' long.



EXHAUST RATE REQUIREMENTS

(Recommended Min. Exhaust Flow Rate)	TEMPERATURE OF EQUIPMENT		
	400°	600°	700°
CFM Exhaust / Ft.	200	300	350

ORDER ENTRY INFORMATION

Project:

Item:

Representative:

Model:

Length: Qty:

Width:
Height:

Exhaust CFM:

Entered by:

Date:

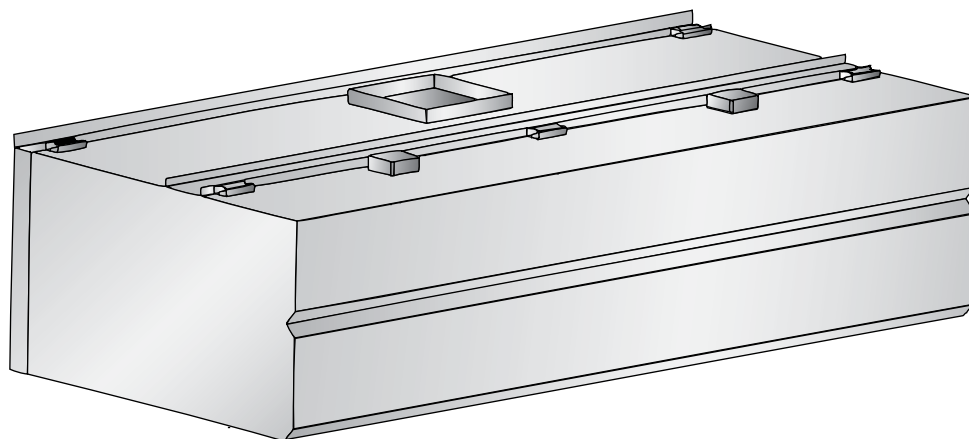
Drawings Req'd: Y N

List Miscellaneous
Options Separately

Duo-Aire®

Duo-Aire reserves the right to make changes in design and specifications without prior notice.

Duo-Aire®



Model DW-AVC

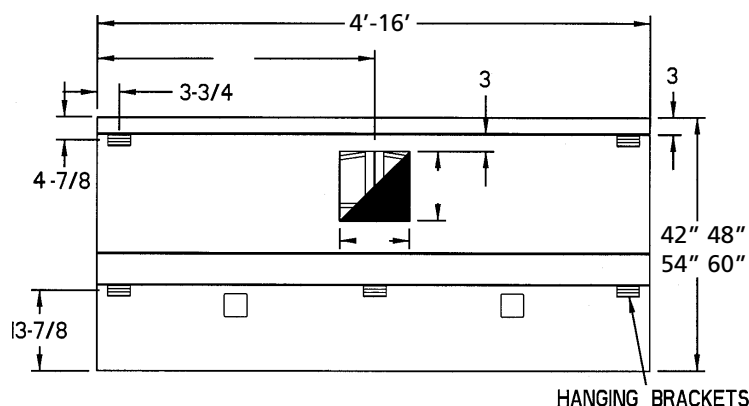
A single plenum non-compensating exhaust only wall hung canopy constructed of stainless steel where visible and aluminized steel in concealed locations. All external seams shall be fluid welded, and internal seams shall be sealed with a high temperature silicone caulk. Exhaust canopy to be equipped with adjustable Air Volume Controllers installed directly behind the filters. Air Volume Controllers are to be factory installed and adjusted for the cooking equipment specified. Canopy shall be listed to meet NSF and UL 710 standards and constructed to meet NFPA-96. Grease trough to be easily removable and slope to removable grease cup.

STANDARD FEATURES

- UL Listed Aluminum Grease Filters
- UL Listed Globe Lights
- 3" Rear Air Space
- Removable Grease Trough & Cup
- Hanging Brackets
- Exhaust Collar Installed
- Adjustable Air Volume Controllers

OPTIONS

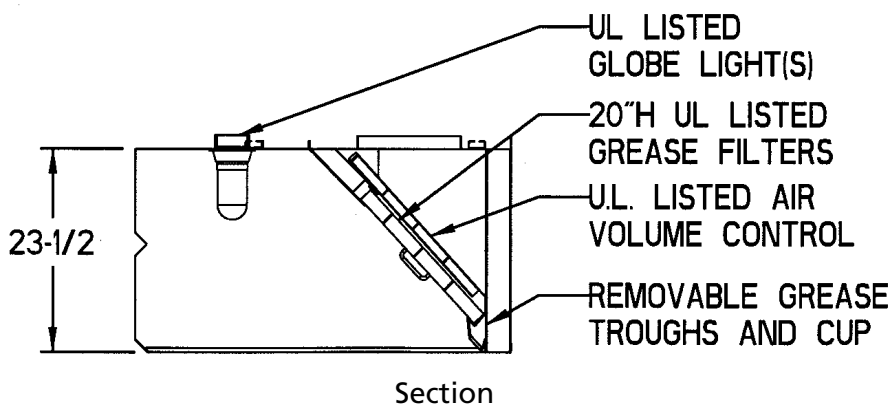
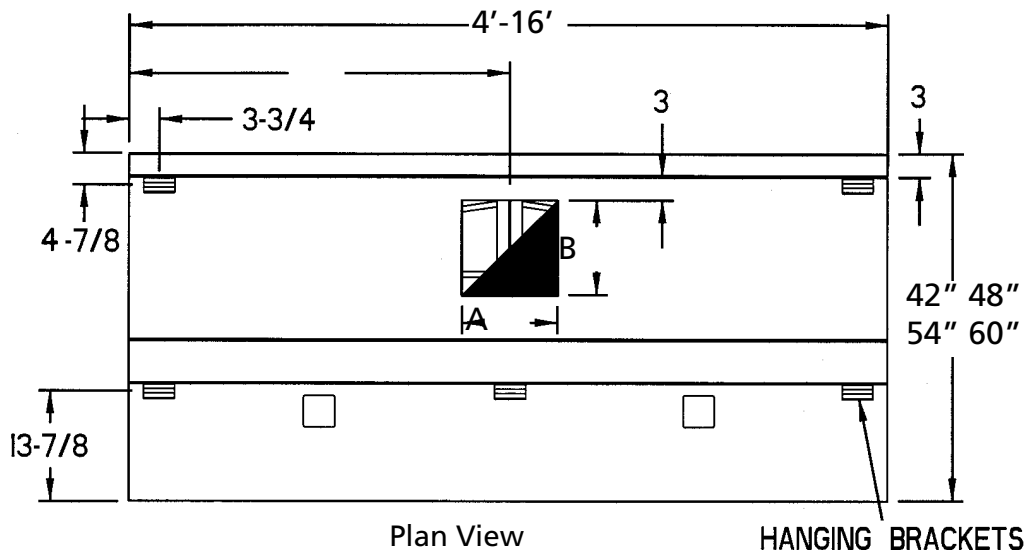
- All Stainless Steel Construction
- UL Listed Stainless Steel Grease Filters
- 14" Utility Cabinet for Fire Suppression System
- Electrical Control Panel
- Pre-Plumbed Fire Suppression
- UL Listed Insulated Top, Back and/or Ends for Zero Clearance to Combustible
- Stainless Steel Top Enclosures
- Light Switch
- Fan Switch
- Rooftop Packages



Plan View
(See reverse side for larger drawing)

BUILT IN
ACCORDANCE
WITH NFPA 96





EXHAUST RATE REQUIREMENTS

(Recommended Min. Exhaust Flow Rate)	TEMPERATURE OF EQUIPMENT		
	400°	600°	700°
CFM Exhaust / Ft.	200	250	-

ORDER ENTRY INFORMATION

Project:

Item:

Representative:

Model:

Length: Qty:

Width:
Height:

Exhaust CFM:

Entered by:

Date:

Drawings Req'd: Y N

List Miscellaneous
Options Separately

Duo-Aire®

Duo-Aire reserves the right to make changes in design and specifications without prior notice.

Duo-Aire®

ENGINEERING WORKSHEET

DW SERIES

400°F. EQUIPMENT

Length in Ft.	Exhaust CFM 200/Ft.	Exhaust Collar A X B	Duct Velocity FPM	Filter Area Sq. Ft.	Filter Velocity FPM	Static Pressure
4	800	9 x 8	1600	4.2	191	.75
5	1000	10 x 9	1600	5.3	189	.75
6	1200	10 x 10	1728	6.3	191	.75
7	1400	11 x 11	1666	7.4	190	.75
8	1600	12 x 12	1600	8.4	191	.75
9	1800	13 x 12	1662	9.5	190	.75
10	2000	15 x 12	1600	10.5	191	.75
11	2200	16 x 12	1650	11.6	190	.75
12	2400	18 x 12	1600	12.6	191	.75
13	2600	(2)11 x 10	1702	14.0	186	.75
14	2800	(2)11 x 11	1666	15.0	187	.75
15	3000	(2)12 x 11	1636	15.8	190	.75
16	3200	(2)12 x 12	1600	16.8	191	.75

DW SERIES

600°F. EQUIPMENT

Length in Ft.	Exhaust CFM 300/Ft.	Exhaust Collar A X B	Duct Velocity FPM	Filter Area Sq. Ft.	Filter Velocity FPM	Static Pressure
4	1200	10 x 10	1728	4.2	286	1.0
5	1500	12 x 11	1636	5.3	283	1.0
6	1800	13 x 12	1662	6.3	286	1.0
7	2100	15 x 12	1680	7.4	284	1.0
8	2400	18 x 12	1600	8.4	286	1.0
9	2700	20 x 12	1620	9.5	284	1.0
10	3000	22 x 12	1636	10.5	286	1.0
11	3300	24 x 12	1650	11.6	284	1.0
12	3600	26 x 12	1662	12.6	286	1.0
13	3900	(2)14 x 12	1671	14.0	279	1.0
14	4200	(2)15 x 12	1680	15.0	280	1.0
15	4500	(2)16 x 12	1688	15.8	285	1.0
16	4800	(2)17 x 12	1694	16.8	286	1.0

ENGINEERING WORKSHEET

DW-AVC SERIES 400°F. EQUIPMENT

Length in Ft.	Exhaust CFM 200/Ft.	Exhaust Collar A X B	Duct Velocity FPM	Filter Area Sq.Ft.	Filter Velocity FPM	Static Pressure
4	800	9 x 8	1600	2.6	308	1.0
5	1000	10 x 9	1600	3.4	294	1.0
6	1200	10 x 10	1728	4.0	300	1.0
7	1400	11 x 11	1666	4.6	304	1.0
8	1600	12 x 12	1600	5.4	296	1.0
9	1800	13 x 12	1662	6.0	300	1.0
10	2000	15 x 12	1600	6.8	294	1.0
11	2200	16 x 12	1650	7.4	297	1.0
12	2400	18 x 12	1600	8.0	300	1.0
13	2600	19 x 12	1642	8.9	292	1.25
14	2800	20 x 12	1680	9.6	292	1.25
15	3000	22 x 12	1636	10.0	300	1.25
16	3200	23 x 12	1670	10.8	296	1.25

DW-AVC SERIES 600°F. EQUIPMENT

Length in Ft.	Exhaust CFM 250Ft.	Exhaust Collar A X B	Duct Velocity FPM	Filter Area Sq. Ft.	Filter Velocity FPM	Static Pressure
4	1000	10 x 9	1600	2.6	385	1.25
5	1250	11 x 10	1636	3.4	368	1.25
6	1500	12 x 11	1636	4.0	375	1.25
7	1750	13 x 12	1615	4.6	380	1.25
8	2000	15 x 12	1600	5.4	370	1.25
9	2250	16 x 12	1688	6.0	375	1.25
10	2500	18 x 12	1667	6.8	368	1.25
11	2750	20 x 12	1650	7.4	372	1.25
12	3000	22 x 12	1636	8.0	375	1.25
13	3250	24 x 12	1625	8.9	365	1.50
14	3500	26 x 12	1615	9.6	365	1.50
15	3750	28 x 12	1607	10.0	375	1.50
16	4000	30 x 12	1600	10.8	370	1.50