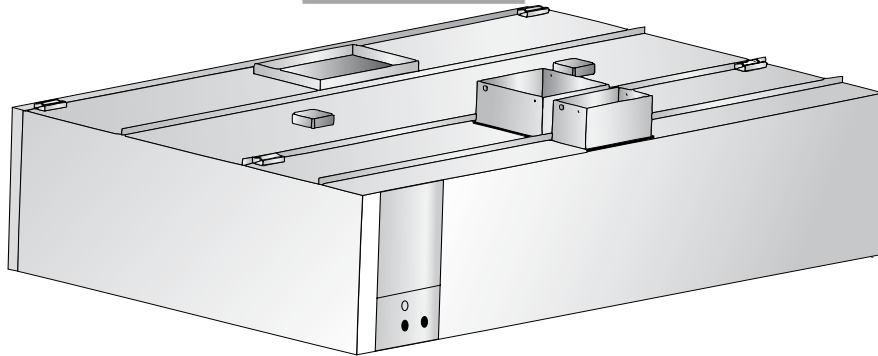


Duo-Aire

W-VI Internal Make-up Air Wall Canopy

With Diffuser



W-VI

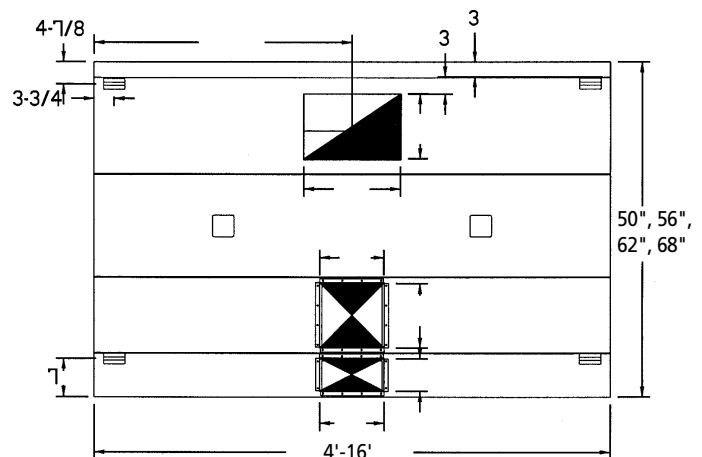
A single shell combination internal make-up air/air curtain canopy constructed of stainless steel where visible and aluminized steel where concealed. All external seams shall be fluid welded and all internal seams shall be sealed with a high temp. silicone caulk. The Make-up air grill shall be an extruded aluminum diffuser with 15° nonadjustable vanes spaced 1/2" apart. An integral air curtain shall be provided on front of canopy with diffusers same as make up air grill. The hood supply plenum shall be lined with 1" thick foil backed fiberglass insulation. The supply air shall pass through two perforated metal baffle plates to even out air flow. A UL Listed fire damper shall be supplied in both supply collars. Canopy shall be listed to meet NSF and UL 710 Standards and constructed to meet NFPA-96 requirements. Grease trough to be easily removable and slope to removable grease cup.

STANDARD FEATURES

- Full Length Air Curtain
- UL Listed Aluminum Grease Filters
- UL Listed Globe Lights
- 3" Rear Air Space
- Removable Grease Trough & Cup
- Exhaust & Supply Collars Installed
- Hanging Brackets
- 1" Thick Air Plenum Insulation
- Stainless Steel Construction Where Visible
- Extruded Aluminum Interior Linear Diffuser
- Extruded Aluminum Air curtain Linear Diffuser
- UL Listed Fire and Air Volume Dampers in Supply Collar
- Surface Mounted Control Panel

OPTIONS

- All Stainless Steel Construction
- UL Listed Stainless Steel Grease Filters
- UL Listed Insulated Top, Back and/or Ends for Zero Clearance to Combustible
- 14" Utility Cabinet for Fire Suppression System
- Electrical Control Panel
- Pre-Plumbed Fire Suppression
- Stainless Steel Top Enclosures



Plan View

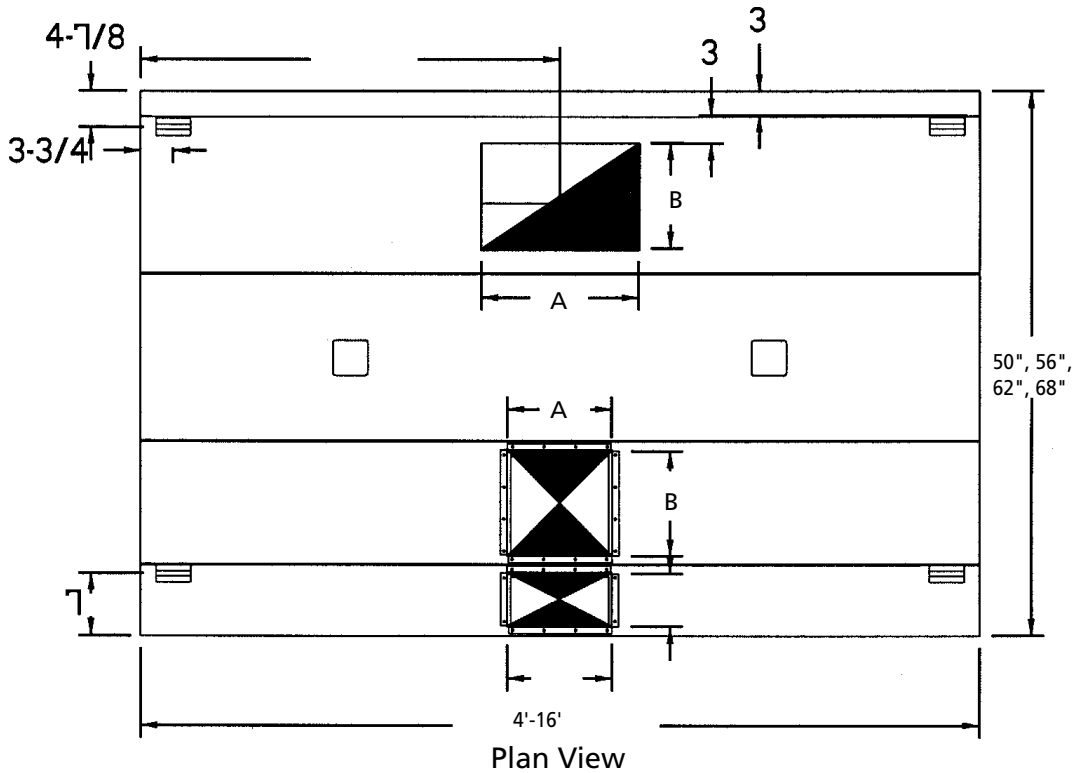
(See reverse side for larger drawing)

Note: Two exhaust ducts required after 12' long.

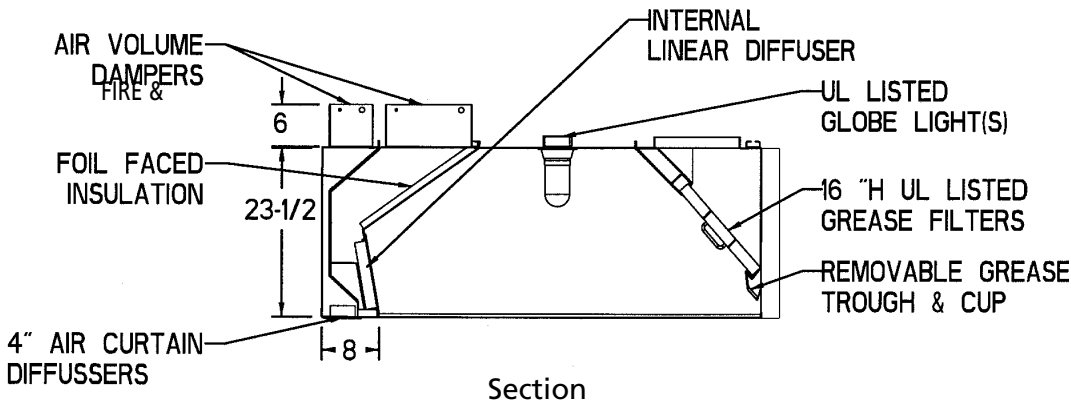
BUILT IN
ACCORDANCE
WITH NFPA 96



W-VI Series Specifications



Note: Two exhaust ducts required after 12' long.



EXHAUST AND SUPPLY RATE REQUIREMENTS

(Recommended Min. Exhaust Flow Rate)	TEMPERATURE OF EQUIPMENT		
	400°	600°	700°
CFM Exhaust / Ft.	300	350	-
CFM Supply / Ft.	210	210	-
CFM Supply A.C./ Ft.	70	70	-

ORDER ENTRY INFORMATION

Project:

Item:

Representative:

Model:

Length: Qty:

Width:
Height:

Duct - Concentric
Parallel

Exhaust CFM:
Supply CFM:
Air Curtain CFM:

Entered by:

Date:

Drawings Req'd: Y N

List Miscellaneous
Options Separately

Duo-Aire®

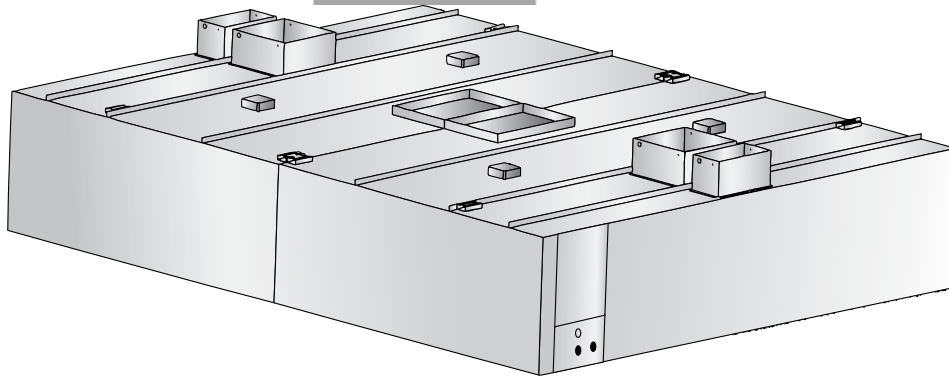
Duo-Aire reserves the right to make changes in design and specifications without prior notice.

Duo-Aire®

Duo-Aire[®]

I-VI Internal Make-up Air Island Canopy

With Diffuser



Model I-VI

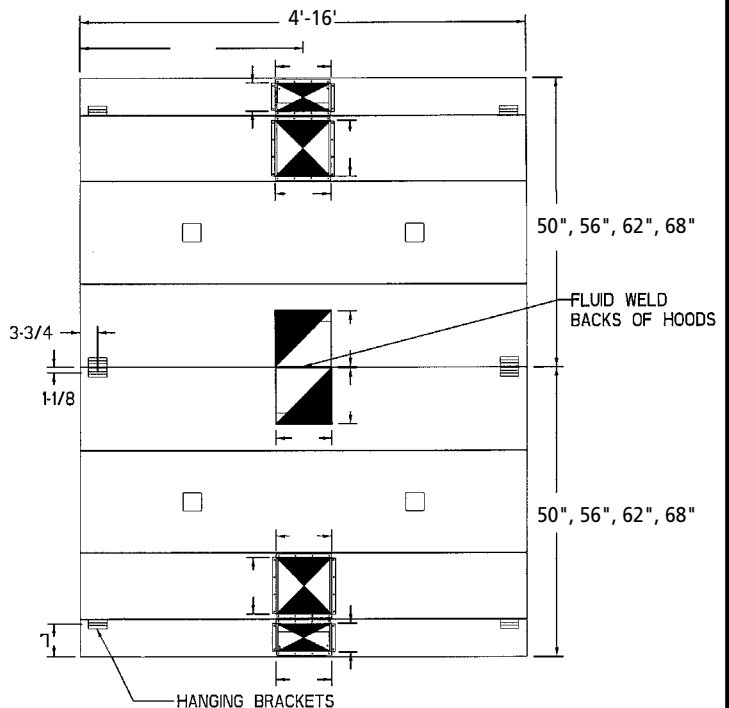
A double shell internal make-up air canopy constructed of stainless steel where visible and aluminized steel where concealed. All external seams shall be fluid welded and all internal seams shall be sealed with a high temp. silicone caulk. The Make-up air grill shall be an extruded aluminum diffuser with 15° nonadjustable vanes spaced 1/2" apart. An integral air curtain shall be provided on front of canopy with diffusers as make up air grill. The hood supply plenum shall be lined with 1" thick foil backed fiberglass insulation. The supply air shall pass through two perforated metal baffle plates to even out air flow. A UL Listed fire damper shall be supplied in both supply collars. Canopy shall be listed to meet NSF and UL 710 Standards and constructed to meet NFPA-96 requirements. Grease trough to be easily removable and slope to removable grease cup.

STANDARD FEATURES

- Full Length Air Curtain
- UL Listed Aluminum Grease Filters
- UL Listed Globe Lights
- Removable Grease Trough & Cup
- Exhaust & Supply Collars Installed
- Hanging Brackets
- 1" Thick Air Plenum Insulation
- Stainless Steel Construction Where Visible
- Extruded Aluminum Interior Linear Diffuser
- Extruded Aluminum Air curtain Linear Diffuser
- UL Listed Fire and Air Volume Dampers in Supply Collar
- Flush Mounted Control Panel

OPTIONS

- All Stainless Steel Construction
- UL Listed Stainless Steel Grease Filters
- 14" Utility Cabinet for Fire Suppression System
- Electrical Control Panel
- Pre-Plumbed Fire Suppression
- Stainless Steel Top Enclosures
- UL Listed Insulated Top and/or Ends for Zero Clearance to Combustible



Plan View

(See reverse side for larger drawing)

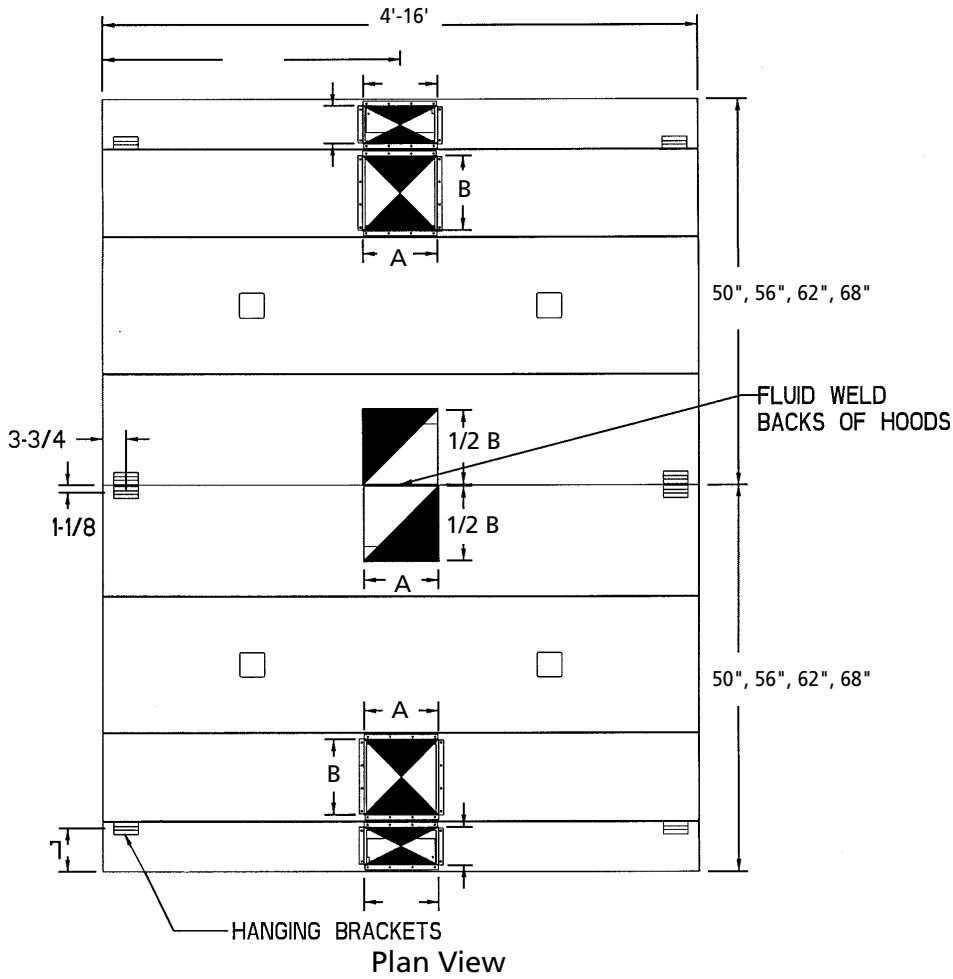
Note: Two exhaust ducts required after 12' long.

BUILT IN
ACCORDANCE
WITH NFPA 96

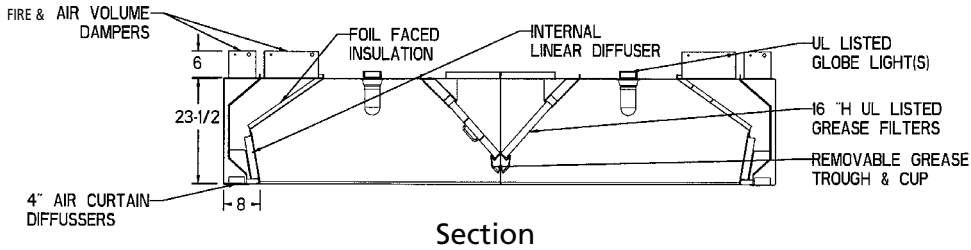


I-VI - Internal Make-up Air Island Canopy

I-VI Series Specifications



Note: Two exhaust ducts required after 12' long.



EXHAUST AND SUPPLY RATE REQUIREMENTS

(Recommended Min. Exhaust Flow Rate)	TEMPERATURE OF EQUIPMENT		
	400°	600°	700°
CFM Exhaust / Ft.	600	700	-
CFM Supply / Ft.	420	420	-
CFM Supply A.C./ Ft.	70	70	-

ORDER ENTRY INFORMATION

Project:

Item:

Representative:

Model:

Length: Qty:

Width:
Height:

Duct - Concentric
 Parallel

Exhaust CFM:
Supply CFM:
Air Curtain CFM:

Entered by:

Date:

Drawings Req'd: Y N

List Miscellaneous
Options Separately

Duo-Aire[®]

Duo-Aire reserves the right to make changes in design and specifications without prior notice.

ENGINEERING WORKSHEET

W-VI SERIES 400°F. EQUIPMENT

Length in Ft.	Exhaust CFM 300/Ft.	Exhaust Collar A X B	Duct Velocity FPM	Filter Area Sq. Ft.	Filter Velocity FPM	Exhaust Static Pressure	Supply CFM 10" Diff.	Supply CFM 4" Diff.	Supply Static Pressure	Supply Collar A X B	Air Curtain Collar
4	1200	10 x 10	1728	4.2	286	.75	840	140	.50	12x12	6x12
5	1500	12 x 11	1636	5.3	283	.75	1050	175	.50	12x12	6x12
6	1800	13 x 12	1662	6.3	286	.75	1260	210	.50	18x12	6x12
7	2100	15 x 12	1680	7.4	284	.75	1470	245	.50	18x12	6x12
8	2400	18 x 12	1600	8.4	286	.75	1680	280	.50	18x12	(2)6x12
9	2700	20 x 12	1620	9.5	284	.75	1890	315	.50	24x12	(2)6x12
10	3000	22 x 12	1636	10.5	286	.75	2100	350	.50	24x12	(2)6x12
11	3300	24 x 12	1650	11.6	284	.75	2310	385	.50	24x12	(2)6x12
12	3600	26 x 12	1662	12.6	286	.75	2520	420	.50	24x12	(3)6x12
13	3900	(2)14 x 12	1671	14.0	279	.75	2730	455	.50	(2)18x12	(3)6x12
14	4200	(2)15 x 12	1680	16.0	280	.75	2940	490	.50	(2)18x12	(3)6x12
15	4500	(2)16 x 12	1688	15.8	285	.75	3150	525	.50	(2)18x12	(3)6x12
16	4800	(2)18 x 12	1600	16.8	286	.75	3360	560	.50	(2)18x12	(3)6x12

W-VI SERIES 600°F. EQUIPMENT

Length in Ft.	Exhaust CFM 350/Ft.	Exhaust Collar A X B	Duct Velocity FPM	Filter Area Sq. Ft.	Filter Velocity FPM	Exhaust Static Pressure	Supply CFM 10" Diff.	Supply CFM 4" Diff.	Supply Static Pressure	Supply Collar A X B	Air Curtain Collar
4	1400	12 x 10	1680	4.2	333	1.0	840	252	.50	12x12	6x12
5	1750	13 x 12	1615	5.3	330	1.0	1050	252	.50	12x12	6x12
6	2100	15 x 12	1680	6.3	333	1.0	1260	252	.50	12x18	6x12
7	2450	18 x 12	1633	7.4	331	1.0	1470	252	.50	12x18	6x12
8	2800	20 x 12	1680	8.4	333	1.0	1680	252	.50	12x18	(2)6x12
9	3150	23 x 12	1643	9.5	332	1.0	1890	252	.50	12x24	(2)6x12
10	3500	26 x 12	1615	10.5	333	1.0	2100	252	.50	12x24	(2)6x12
11	3850	28 x 12	1650	11.6	332	1.0	2310	252	.50	12x24	(2)6x12
12	4200	30 x 12	1680	12.6	333	1.0	2520	252	.50	12x24	(3)6x12
13	4550	(2)16 x 12	1706	14.0	325	1.0	2730	252	.50	(2)12x18	(3)6x12
14	4900	(2)18 x 12	1633	15.0	327	1.0	2940	252	.50	(2)12x18	(3)6x12
15	5250	(2)19 x 12	1658	15.8	332	1.0	3150	252	.50	(2)12x18	(3)6x12
16	5600	(2)20 x 12	1680	16.8	333	1.0	3360	252	.50	(2)12x18	(3)6x12

ENGINEERING WORKSHEET

I-VI SERIES 400°F. EQUIPMENT

Length in Ft.	Exhaust CFM 600/Ft.	Exhaust Collar A X B	Duct Velocity FPM	Filter Area Sq. Ft.	Filter Velocity FPM	Exhaust Static Pressure	Supply CFM 10" Diff.	Supply CFM 4" Diff.	Supply Static Pressure	Supply Collar A X B	Air Curtain Collar
4	2400	15 x 14	1645	8.4	286	.75	1680	280	.50	(2)12x12	(2)6x12
5	3000	16 x 16	1688	10.6	283	.75	2100	350	.50	(2)12x12	(2)6x12
6	3600	18 x 18	1600	12.6	286	.75	2520	420	.50	(2)12x12	(2)6x12
7	4200	20 x 18	1680	14.8	284	.75	2940	490	.50	(2)18x12	(2)6x12
8	4800	20 x 20	1728	16.8	286	.75	3360	560	.50	(2)18x12	(4)6x12
9	5400	24 x 20	1620	19.0	284	.75	3780	630	.50	(2)18x12	(4)6x12
10	6000	26 x 20	1662	21.0	286	.75	4200	700	.50	(2)24x12	(4)6x12
11	6600	26 x 22	1662	23.2	284	.75	4620	770	.50	(2)24x12	(4)6x12
12	7200	26 x 24	1662	25.2	286	.75	5040	840	.50	(2)24x12	(6)6x12
13	7800	(2)18 x 18	1733	28.0	279	.75	5460	910	.50	(4)18x12	(6)6x12
14	8400	(2)20 x 18	1680	30.0	280	.75	5880	980	.50	(4)18x12	(6)6x12
15	9000	(2)20x 20	1620	31.6	285	.75	6300	1050	.50	(4)18x12	(6)6x12
16	9600	(2)20x 20	1728	33.6	286	.75	6720	1120	.50	(4)24x12	(6)6x12

I-VI SERIES 600°F. EQUIPMENT

Length in Ft.	Exhaust CFM 700/Ft.	Exhaust Collar A X B	Duct Velocity FPM	Filter Area Sq. Ft.	Filter Velocity FPM	Exhaust Static Pressure	Supply CFM 10" Diff.	Supply CFM 4" Diff.	Supply Static Pressure	Supply Collar A X B	Air Curtain Collar
4	2800	16 x 15	1680	8.4	333	1.0	1680	280	.50	(2)12x12	(2)6x12
5	3500	18 x 17	1647	10.6	330	1.0	2100	350	.50	(2)12x12	(2)6x12
6	4200	20 x 18	1680	12.6	333	1.0	2520	420	.50	(2)12x12	(2)6x12
7	4900	21 x 20	1680	14.8	331	1.0	2940	490	.50	(2)18x12	(2)6x12
8	5600	24 x 20	1680	16.8	333	1.0	3360	560	.50	(2)18x12	(4)6x12
9	6300	28 x 20	1620	19.0	332	1.0	3780	630	.50	(2)18x12	(4)6x12
10	7000	28 x 22	1636	21.0	333	1.0	4200	700	.50	(2)24x12	(4)6x12
11	7700	28 x 24	1650	23.3	332	1.0	4620	770	.50	(2)24x12	(4)6x12
12	8400	30 x 24	1680	25.2	333	1.0	5040	840	.50	(2)24x12	(6)6x12
13	9100	(2)20 x 20	1638	28.0	325	1.0	5460	910	.50	(4)18x12	(6)6x12
14	9800	(2)21 x 20	1680	30.0	327	1.0	5880	980	.50	(4)18x12	(6)6x12
15	10500	(2)22 x 20	1718	31.6	332	1.0	6300	1050	.50	(4)18x12	(6)6x12
16	11200	(2)24 x 20	1680	33.6	333	1.0	6720	1120	.50	(4)24x12	(6)6x12